



THE MAYOR OF FOOTSCRAY'S

Souvenir
of the
Official Opening
of the

CIVIC OFFICES
and
COUNCIL CHAMBER

By His Excellency, the Governor,
LORD HUNTINGFIELD
K.C.M.G.



THURSDAY, 19TH NOVEMBER, 1936

BEAUTY

- - in wood

▼ The Queensland Maple flush panelling, joinery work and doors in Footscray's new civic building demonstrate the ability of an Australian firm to manufacture high quality woodwork.

▼ The many examples of our work, spread throughout the Commonwealth and overseas, reflect our 40 years' experience in wood-working of all kinds.

▼ Twenty years ago we manufactured the Honour Board for the City of Footscray, and 15 years ago, the Mayor's chair and desks in the council chamber. The value that the Footscray Council place upon them is shown in their re-use in the new building.

by **GOLDMAN**

H. GOLDMAN PTY. LTD.

CHAPEL ST. (at Church St. Bridge) SOUTH YARRA.

TELEPHONE: WINDSOR 8118 — 8119.

*The Mayor and
The Mayoress,
Cr. and Mrs.
Edward Hanmer*



ERECTED at a cost of over £40,000, the City of Footscray town hall will be officially opened at 3 p.m. this Thursday, 19th November, 1936, by His Excellency, the Governor, Lord Huntingfield.

With entertainment covering three days, the Mayor and Mayoress, Cr. and Mrs. E. Hanmer, have planned to fittingly mark the occasion, one of their many thoughtful acts being to invite all citizens over 65 years of age to partake of their hospitality and inspect the civic building.

In addition to Cr. and Mrs. Hanmer meeting the many commitments occasioned by the ceremonies, the Mayoress has generously given a fine piano for the new assembly hall.

For the opening the Mayor will wear, for the first time, his new chain of office—links of which have been contributed by Cr. Hanmer himself and ex-Mayors and their decedents. The chain and pendant weighs 20 ounces.

In recognition of the public-spiritedness of Cr. and Mrs. Hanmer, these illustrated souvenir booklets, marking the opening of the new edifice, have been presented to them for distribution.

Achievement . . .

THROUGH nobility of design and material, great cities express the timeless permanence and high purpose of buildings devoted to the perpetuation of the public weal. And in the Romanesque edifice which today houses the administrative offices and council chamber of the City of Footscray, the same distinguishing, intrinsic qualities of harmony, beauty and calm dignity are apparent.

ENRICHING the reputation of the community, architecturally enhancing the district, Footscray's new town hall expresses, in outward form, the worth and permanence of the city.

REPRESENTING the latest thought in municipal planning, this imposing edifice rises, Phoenix-like, from the ashes of the fine old building which served as a civic headquarters for over half a century. Modern in every detail, it represents a new, eager age—just as its bluestone predecessor was symbolic in its day of one of the district's basic industries.



A tribute to Footscray's 3,000 citizens who served in the Great War. The Honor Board—a beautiful specimen of the woodworker's skill—which has been transferred from the Town Hall recently demolished, to the new Civic Building.

FOOTSCRAY'S NEW TOWN HALL



FOLLOWING upon the keen advocacy by various councillors for a new town hall, the council considered sites in 1933, and finally, but not unanimously, resolved not to expend any money upon acquiring a more advantageous position upon which to establish a civic centre. Eventually, on 5th August, 1935, the council adopted final plans and specifications prepared by Mr. J. Plottel, F.R.A.I.A., later decided to construct the building by day labor and to engage as many unemployed residents as possible. Finally work was commenced on 15th November.

The foundation stone was laid on the 22nd February of this year by the then Mayor, Cr. W. H. Anderson, in the presence of a representative gathering of a thousand people. The architect presented an inscribed trowel to Cr. Anderson, who also placed in position in the facade the foundation stone of the first municipal building erected in 1875.

Bold in its proportions, the exterior of Footscray's new civic edifice has been treated after the Romanesque manner, the walls being built of specially selected bricks of variegated color, the colors ranging from browns to red, and buff architectural terra cotta has been used to the main portico, columns, balconies, arches and elsewhere where accents or color contrasts were necessary.



The Beautiful PORTICO

With its four Corinthian-influenced columns adding dignity, the portico is the dominating feature of the exterior, and beneath the graceful arches and the enriched main doors, one enters the entrance and enquiry lobby. It is here, in the mosaic floor, that the city's coat of arms is so admirably embellished.



Massive revolving doors connect the entrance lobby with the main hall or foyer, dominated with its elliptical black and white marble stairway and bronze handrail. Extending to the right and left of the hall, from black fluted marble columns, is the main corridor, admirably portioned to its 14 feet width and complete with grided counters to the electric supply department, rates' and town clerk's general office.

The Terra Cotta Trim

TO THE ARCHITECTURAL FEATURES OF THE CITY OF FOOTSCRAY'S NEW TOWN HALL FACADES, THE SHINGLE, TILE ROOFING AND LETTERS, WERE SUPPLIED BY . . .

WUNDERLICH LIMITED

CR. HANNA & STURT STS., SOUTH MELBOURNE,
Tel.: M 1261 (3 lines). S.C.5.



Craftsmanship

A distinctive example of refinement in official decoration—and of the goldsmith's art in which both ancient and modern processes were employed to ensure a creation that will endure as a symbol of graceful beauty and exquisite richness—the Mayoral chain presented to the city was designed and fashioned by Norman Griffin, craftsman goldsmith and jeweller.

And that distinction, individuality and prestige inseparably associated with the enduring and beautiful handiwork of Norman Griffin is offered to a clientele which also seeks the precise interpretation of its own personal tastes and preferences in jewelled ornaments

NORMAN GRIFFIN

*Craftsman Goldsmith,
Jeweller and Watchmaker*

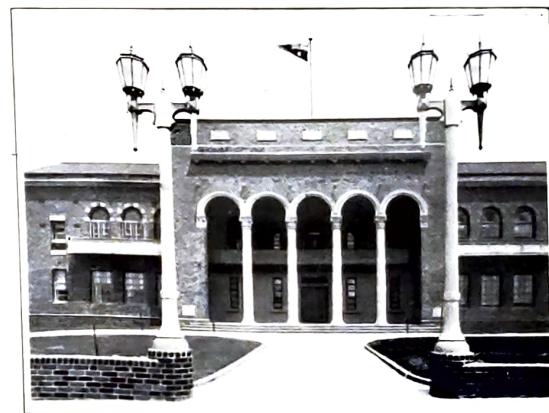
141 HOPKINS STREET, FOOTSCRAY
Tel.: Footscray 715.

A.N.A. GIFT LAMPS

A gesture to mark their jubilee celebration as the largest branch of the Australian Natives' Association in Australia, the Footscray branch, whose membership tallies just upon the 1,800 mark, donated £100 for the erection of the two imposing lighting standards depicted on the right.

At 8 o'clock this Thursday night, 19th November, representatives of the branch will switch on the lights, and the Mayor (Cr. Hamner) will accept the gift on behalf of the city.

In accordance with the policy of the A.N.A., all the materials used were Australian.





THE MAIN CORRIDORS

The top illustration shows the impressive main corridor, with rates' payment counter in the foreground. To the right is the main, first-floor corridor, with counters to the engineer and surveyor's offices.



THE ARCHITECT



Joseph Plottel, Esq., F.R.A.I.A., of 31 Queen Street, Melbourne, who designed the City of Footscray's Romanesque town hall and supervised its erection.

Subsidiary entrances have been planned at the ends of the main corridor so that the traffic circulation of the people is regulated at the busiest periods by entry at the main entrance and egress from the side entrance.

Protective

- "SIMPLEX" FIRE EXTINGUISHERS RELIABLE . . . AND PREVENTATIVE . . . HAVE BEEN INSTALLED THROUGHOUT TO PROTECT THIS FINE BUILDING BY—

● WORMALD BROTHERS LIMITED
180 BAY ST., PORT MELBOURNE. Tel.: M3121 (4 lines)



To left is shown the showers and toilet appointments for the use of the public. Tiled in pastel shades, these conveniences represent the standard.



Mr. A. H. Manro, City Engineer, who, in conjunction with the architect, supervised the erection of the new civic buildings.

It is worthy of note, too, that special consideration has been given to the quietening of noise throughout by the laying of noise reducing sub-floors before laying the rubber floors to corridors and other rooms where heavy traffic will take place.

Service -- for over 50 Years

Back in 1890, in the days before Footscray had reached the status of a city, George Gordon was the district's leading ironmonger. And in the intervening years, faithful adherence to those high standards of quality and service which distinguished the firm at its inception, has been instrumental in maintaining "Gordon's" in the unrivalled position as the district's largest and most progressive ironmongery and hardware store.

For over 50 years, Gordon's have been satisfying the Footscray Council with various requirements, and in the erection of the city's new town hall, Gordon hardware equipment was chosen because of its reputation for quality, attractiveness and trouble-free service.

GEO. GORDON & SON
161-163 BARKLY STREET

TELEPHONE: FOOTSCRAY 49

Flush Panelling Distinguishes Offices

The town clerk's and electrical engineer's rooms, also corridors and counter fronts, are panelled with flush wood panelling of selected Queensland maple grain and with the flush wood doors and the simple furniture, lend a quiet dignity.

The main office of the city engineer and building surveyor, occupies the north west corner of the building and enjoys the maximum natural light at all seasons of the year. All offices have been panelled here, too. Ceilings throughout have been tinted and the molds and enriched bands painted in subdued and softly contrasting colors so that the whole of the various suites of rooms form a complete and harmonious unit.

Mr. John Gent, Town Clerk, who directed the organisation of the arrangements for the opening of the new town hall.



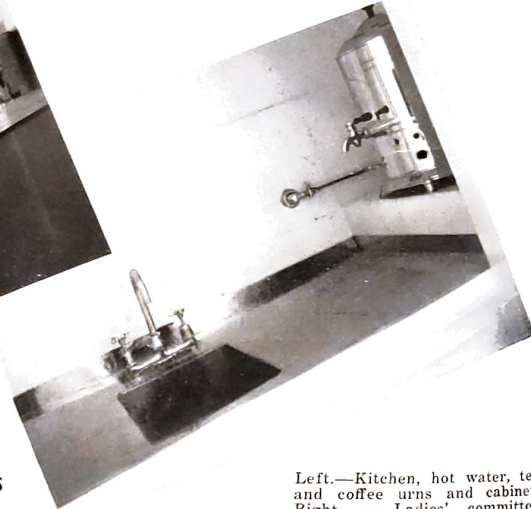
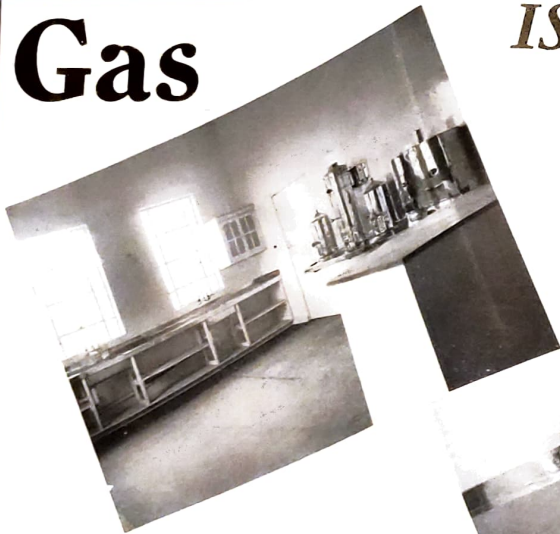
The Mayoress's Room



Progress

Gas

IS SUPREME!



Left.—Kitchen, hot water, tea and coffee urns and cabinet. Right. — Ladies' committee room, incorporating hot water and tea urn.

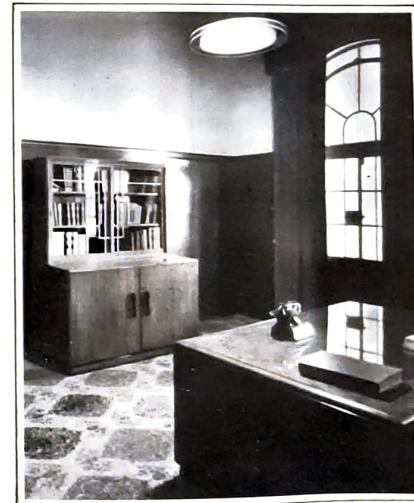
Footscray Municipal Offices

-- USE GAS - the modern fuel

because

- Perfect cooking by regulated GAS heat means real economy in time, labor, and money!
- Speedy GAS gives its maximum heat—at once! There is no waste of heat and time—with GAS!

The city engineer's office is furnished, like those of the other officers, elaborately, but along simple lines, complete with a spacious glass-top table and bookcase holding a reference library.



FORGES PTY. LTD. has developed from a modest store, erected and occupied in 1884 (on a site originally occupied by some of Footscray's first sheeps) to a commodious emporium, catering for—and satisfying—thousands of customers, not only throughout the western suburbs, but, with mail-order ramifications, extending over the Equator.

For over half a century, Efficiency and Goodwill have been the foundation stones upon which this flourishing business has maintained its continued trading progress.

Step by step, throughout Footscray's evolution from a small town to an important city, Forge's has played its part in the business sphere, and today is proud to be associated with the opening of the city's magnificent town hall, marking as it does another forward step in the development of a great municipality.

● **FORGE'S**
PTY. LTD.

Universal Drapers

82-90 NICHOLSON STREET

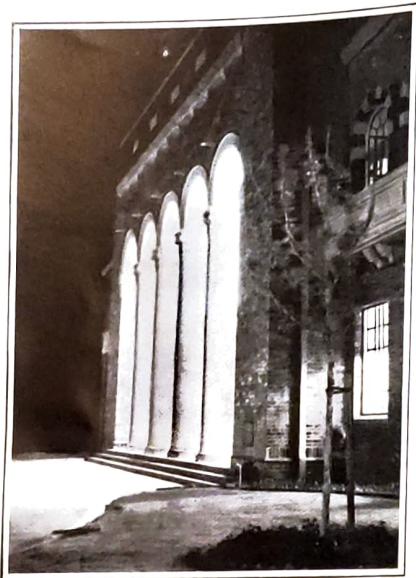
THE COLONIAL GAS ASSOCIATION LIMITED

FOOTSCRAY — WILLIAMSTOWN — SUNSHINE

Call and inspect our Modern Showrooms at Paisley Street, Footscray.



*Lighting Reveals
Full Beauty*



THE MAYOR'S ROOM

As one surmounts the winding stairs, a focal point of interest at the top is the magnificent honor board of the men who served in the Great War. Radiating right and left, corridors connect the council chamber, complete with Mayor's and Mayoress's suites and committee rooms at one end, and assembly hall at the other. Simple panelling and luxurious carpets combine in the Mayor's room to ensure very attractive quarters.

Floodlights are installed to illuminate the whole of the vaulted ceiling of the portico (left) and the full beauty of the columns and arches stands revealed in their penetrating light.

The twelve members of the 1936 council are: Cr. E. Hanmer (Mayor), Crs. C. Poynton, C. Farnbach, A. Turner, C. Beever, H. Hansen, C. Frez, W. Anderson, H. Mappin, E. Hester, W. Jacka and W. Jones.

Fine Furniture

Twelve years ago, the Footscray City Council selected the local firm of Bunting & Tickell Pty. Ltd. to supply office furniture, and the excellency and durability of their work is exemplified by the fact that, after minor renovations—repolishing, etc.—it is in first-class condition and fit to join the new office furniture Bunting & Tickell built for Footscray's new town hall.

Specialising for the past 17 years with fine furniture, Bunting & Tickell have supplied the Victoria Racing Club, Victorian Cricket Association, Williamstown Racing Club, Melbourne Harbor Trust, Olympic Tyre Co., Imperial Chemical Industries, Mutual Life Insurance Co., Victorian Football League, Victorian Football Association, Australian Paper Mills, etc

Supplied by **BUNTING & TICKELL**

Specialists in Office Furniture

STATION ROAD, SEDDON :: Tel.: 515 Footscray.



INCORPORATING more than 16 tile, this mosaic reproduction of the of the City of Footscray is set in the floor. To the artists and craftsmen lian Tessellated Tile Co. Pty. Ltd., Mel the credit of this outstanding achievement treatment.



TREES

from many climes are numbered in the botanical collection — one of the finest in Australia — at the Footscray Park. Depicted along Jamieson Avenue are graceful English poplars, set amidst colorful shrubs.

THE FOOTSCRAY PARK

TAKING pride of place amongst the 28 gardens and reservations controlled by the municipality is the Footscray Park — a beautiful place, which had its origin 25 years ago in the gathering of a band of public-spirited citizens who foresaw the possibilities of the then barren, rock-strewn wasteland of 37 acres. It has become famous—other than in horticultural and botanical circles—as a place of rest and beauty.

In this attractively planted hillside reservation, situated in the valley of the Maribyrnong River, and overlooking "famous Flemington," one may meander among the trees and shrubberies where plants of almost every conceivable species flourish. They come from every quarter of the globe — gems from the Occident and the Orient.

New Zealand is represented by the golden-festooned sophoras, the red tea trees, and the crimson pea, and rearing their trunks skyward are the South American oak, the European elm, and poplars. The Californian redwood is familiar amongst the symmetrical conifers.

THE choicest roses from England and nodding daffodils intermingle with gay weigelas, delicately-tinted flowering cherries and the arresting snowball trees, which hail from China and Japan. Rare flowering shrubs and annuals, almost begging description in their variety, are here. All colors, tints and shades, they make the long, winding ways gay in season.

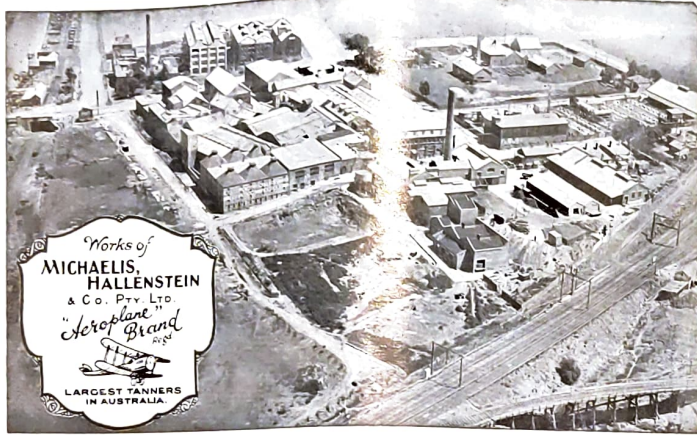
Sub-tropical trees, such as the flame tree, the fire-wheel tree, the tulip tree and frangipani, vie with showy banksias, grevilleas, and lily pillies. A conspicuous tree, much admired on account of its pink foliage, is the Chinese cedar. Grevillea banksii recalls Sir Joseph Banks, who was with Captain Cook in "The Endeavour," and interesting for its usefulness is the New Zealand bootlace tree and an attractive variety of the pepper tree.

By a winding path stands "The Soldier's Tree"—a sturdy English oak that has a history—and intensely interesting are the Imperial Trees of China and Japan, while a variety from South Africa is *dais cotinfolia*.

The combination of water and rock garden at the Thomson Lily Pond, where exquisite plants—many very rare—run riot, has an irresistible appeal to visitors. Colorful lilies, ranging from brilliant scarlet to exotic blue, fascinates visitors, causing them to linger and rest awhile under the vine and wistaria-entwined pergola, from which delightful vistas are obtained over the mirror-like surface of the ponds or upward and along the refreshing verdant lawns to the tree-bedecked slopes.



MR. D. MATTHEWS,
City Curator, who planned the gardens surrounding the new town hall and selected the special trees and shrubs planted in the grounds.



The Old Greets the New

The firm of Michaelis, Hallenstein & Co. Pty. Ltd. offers congratulations to the Mayor, Councillors and Citizens of Footscray on the opening of their new Town Hall.

Few firms are better able to judge the progress Footscray has made during the last half century or more. It was in 1864 that Mr. I. Hallenstein started his first small tannery in Footscray, with an output of 100 hides weekly. Shortly afterwards, he took Mr. M. Michaelis into partnership with him.

Today, the Footscray Tannery is the largest in Australia, and covers 16 acres, with an output of over 3,500 hides per week. Many of the staff have been in the employment of the firm for 35 years and more—some for nearly 50 years.

The new Town Hall is evidence of increasing prosperity, and is a further milestone in Footscray's progress. It is the sincere wish of Michaelis, Hallenstein & Co. Pty. Ltd. that this prosperity and progress will continue unabated.

MICHAELIS HALLENSTEIN & CO.

PTY. LTD.

441-3-5 LONSDALE STREET, MELBOURNE :: Central 10970.
MORELAND STREET, FOOTSCRAY ::: ::: Footscray 870.

Official Opening : Order of Proceedings

THURSDAY:

3 p.m.: Inspection of 32nd Battalion guard of honor by His Excellency Lord Huntingfield.

Presentation of bouquet to Lady Huntingfield.

Address of welcome read by Town Clerk. Addresses by Mayor and parliamentary representative.

Reply by Lord Huntingfield and declaration of opening. Doors unlocked by Governor with gold key presented by the architect as a memento.

3.30 p.m.: Special meeting of Council to thank His Excellency and Lord Huntingfield for their attendance.

Official party, including members of Parliament, Councillors and wives, guests of Mayor and Mayoress at afternoon tea in Mayor's Room.

8.30 p.m.: Presentation of A.N.A. gift lamps.

FRIDAY:

2.30: Mayor and Mayoress receive 500 official guests—visiting Mayors and citizens—and will entertain them at a musicale and afternoon tea.

SATURDAY:

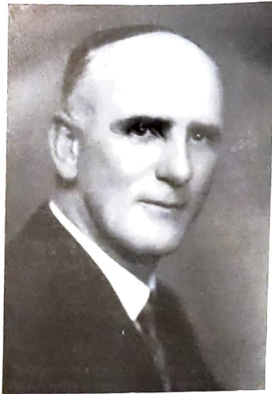
2.30 p.m.: Mayor and Mayoress will receive and welcome elderly people over 65 years of age and act as host and hostess at afternoon tea.

The building will be open to the public after the opening on Thursday, and on Thursday, Friday and Saturday nights, from 7.30 o'clock, when Mayor and Councillors and their wives will receive visitors. Orchestral music will be provided in the assembly hall.

Council Chamber

The council chamber, with its elaborate panelling treatment, along simple lines, reflecting the glow from a series of handsome lighting fixtures, is probably unsurpassed in Australia. The ceiling, highly ornate, emphasizing the simple screen of panelled wood, which forms the background to the Mayoral chair, above which is the city's coat of arms, magnificently carved. Acoustically treated walls prevent any noise from outside sources entering the chamber, whilst visitors in the gallery will be able to hear the speaker without any annoying reverberations.





MR. J. A. CARMODY,
City Electrical Engineer, who supervises
the lighting of the new civic edifice.

Footscray's Electrical Undertaking

FOOTSCRAY'S electrical undertaking, distributing electricity to 13,000 consumers within the municipality and also portions of adjoining shires, is the second largest distributor of electric light and power in the State. One consumer alone purchases more energy than any other municipality, with the exceptions of Melbourne and Brunswick.

During the past 12 months, nearly 32,000,000 units of electricity were consumed, more than half this electricity being distributed to industrial concerns. To give this service, over 380 miles of wires are maintained on the distribution system. So that householders might be better able to meet charges, the council introduced pre-payment meters during the depression—with unqualified success—and they are now a prominent feature of the undertaking.

The undertaking represents a capital expenditure of £250,000 and the sale of energy for light and power amounts to £130,000 per annum. To maintain the undertaking, on an efficient basis, over £30,000 will be expended during the ensuing 12 months upon extensions and improvements.

Designed by the architect in conjunction with the manufacturer, the beautiful lighting fittings are a hundred per cent Australian. The metal frames, cast ornamentations and curved glass panels were all made in Melbourne specially for the building, and the beauty and symmetry of the design of the lighting fittings make them a worthy part of a particularly fine building. The special amber glass with which the fittings are glazed, provides a perfect diffusion of soft and glareless light with an entire absence of lamp spots.

MOSAIC ART

The art of fitting together numerous small multi-colored pieces of hard substance such as glass or earthenware in such a way as to produce the appearance of a picture of rhythmic design is of ancient origin, and was largely applied—to go no further back—to Roman and Byzantine architecture, and its practice in Australia today is of special interest as providing an outlet for native-born talent and the development of a home industry.

In the depicting of the City of Footscray's coat of arms, 16,000 pieces of colored vitreous ware were used, much care and labor, as well as artistic inventiveness, being involved in the work.

Measuring nearly four feet square, this fine specimen of mosaic was made at the Mitcham factory of . . .

Australian Tesselated Tile

Company Pty. Ltd.

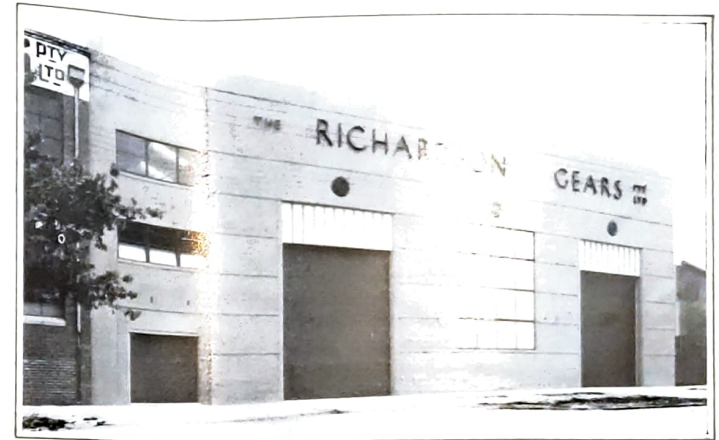
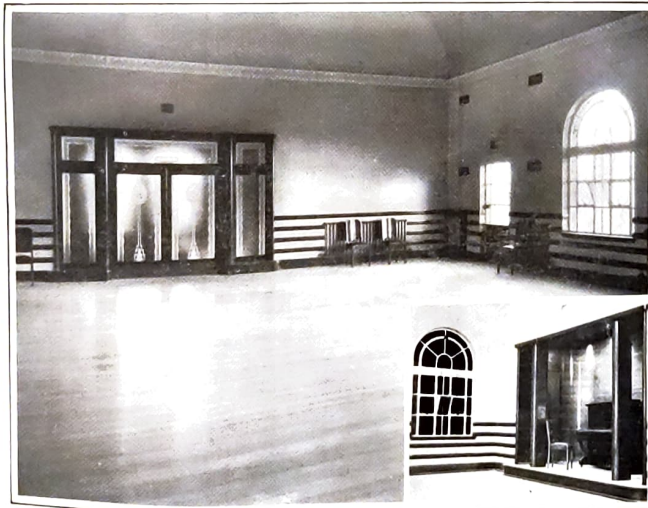
11 QUEEN ST., MELB.

Cent.: 2369.

Manufacturers and Designers of All Classes
of Tile Work

The Assembly Hall

Measuring 64 ft. by 34 ft., the assembly hall is equipped for the holding of social functions and has a capacity, for dances, of about 250 persons. Inset is shown the orchestra dais, showing the piano donated to the city by the Mayoress.



The Modern Trend

Support an Australian Industry



A Modern "Duratenax" Road.

by using . . .

"DURATENAX"

It builds Better Roads

GIVES UNIFORMLY EVEN TEXTURE,
NON-SKID AND NON-GLARE
SURFACES.

REDUCES CONSTRUCTION AND
MAINTENANCE COSTS.

GRADES FOR ALL PURPOSES — —
PRE-MIX, DRAG SHEETING AND
SURFACE COATINGS

DURATAR PTY. LTD.

FOOTSCRAY.
Phone: Footscray 99.

FOUNDED in 1888 by David Richardson, the firm of "Richardsons" has a just claim to pride of place amongst the organisations which have arisen to meet the ever increasing demand for accurate, silent gears Illustrated is the striking modern facade of the latest addition to The Richardson Gears Pty. Ltd., which incorporate bike and locker accommodation on the ground floor, social club library, conveniences, etc., on the first floor, and a dining room on the second floor.

£80,000 ROAD SCHEME
IN PROGRESS.

Over a period of five years, the Footscray Council proposes to expend £80,000 on the reconstruction of main roads throughout the municipality, and is borrowing £50,000 so that an immediate commencement may be made under the direction of the city engineer. With the completion of this scheme, Footscray will be served with a complete system of thoroughfares for the use of manufacturers employing fast and heavy transports.

EVOLUTION . . .

MUNICIPALITY — 1859.

The first sale of Crown land in Footscray was held in 1851, when some blocks realised £250 a half acre. Two years later there were 16 houses and huts in Footscray, and seven in Yarraville.

The area now known as Footscray was, prior to 1859, part of the settled district of Port Phillip. And on 10th June of that year, Footscray was declared a municipality, with a population of 400 and revenue of £756.

BOROUGH — 1863.

Seven years later, in 1863, Footscray was proclaimed a borough, having progressed in population and revenue.

TOWN — 1887.

In 1887, when the population had increased to 11,000, the valuation to £105,000 and the revenue to £14,711, Footscray assumed the dignity of a town—on 25th February.



BUILT

IN 1875

Footscray's second town hall cost £7,000 and gave service for 50 years. An Elizabethan structure, in its day "a modern and handsome building," it was demolished last year on the site of the present building. It originally comprised municipal quarters, post office and court house.

Since 1874

"The Advertiser" has chronicled local happenings of the day, accurately and informatively, and has led or been in the vanguard of every progressive public movement.

Proud to have linked its name with that of a great city and a progressive community, of which it is an integral part, "The Advertiser," Footscray's popular 24-page weekly newspaper, contains all the news of the week — topical, sporting, municipal, fashions, etc., etc.—in breezy and accurate reports.

The ADVERTISER

24 PAGES — — EVERY FRIDAY

CITY — 1891.

In the intervening four years, Footscray developed so rapidly that its population at the end of 1891 was 17,284, valuation £169,616 and revenue over £20,000, and on 23rd April, the Earl of Hopetoun, then Governor, proclaimed Footscray a city—the ninth in the State ranking.



Footscray's First Town Hall

The first meeting of the first Footscray Council was held 77 years ago in the modest galvanised iron building depicted above, in Moreland Street. A storekeeper, Mr. Charles Gordon (whose sons and grandchildren reside in Yarraville) was the first chairman.

A.D. — 1936.

And so to 1930, when the valuation of the municipality reached a record of £645,680. In the world-wide economic depression that followed, Footscray, in common with other centres, felt the effect and zero was reached in 1933 when the valuation had declined by £120,000. Steadily since, the city has maintained progress and today, the valuation figures at £600,254.

The population numbers 50,496 and dwellings total 11,589.

Last year, over 1,090,000 passengers passed through the Footscray station — the largest volume of railway traffic in the State, other than at the main Melbourne stations.

Indicative of the thrift of the people is the fact that deposits in the local State Savings Bank total approximately £1,000,000.

No mean place—this city that grew on a plain.

1888 - -

Synonymous with the advancement of Footscray has been the development of the Real Estate business which today is styled "W. R. Morris."

Step by step with the steady progress that has marked the building of a great city, Footscray's foremost Estate Agency has played its part.

For almost half a century those principles and concepts that underlied this firm's inaugural policy in 1888 in Real Estate transactions, protective Insurances and in the aiding of housing those citizens who are proud to acknowledge themselves residents of the City of Footscray have inspired confidence which holds an ever-increasing clientele and is maintained by the competency of a fully qualified staff.

- 1936

W. R. MORRIS

Auctioneer

SWORN VALUER, REAL ESTATE
AND INSURANCE AGENT

Corner NICHOLSON & BUCKLEY STREETS
FOOTSCRAY. Telephone Footscray 27

When Batman Explored Iramoo

WOODED slopes and grassy glades, over which bands of aborigines pursued fleet kangaroos, a crystal-clear stream flowing between pebbled-lined, tree bound banks, with wild duck and innumerable other aquatic birds foraging for food, or lazily rising to the swell of the tide.

It is difficult to visualise that picturesque scene as typical of Footscray, yet it was so, a hundred years' ago.

It was in June, 1835, that an advance party from John Batman's ship first saw the undulating fields of what is, today, one of the most important industrial cities in Australia. Leaving ship at a point opposite what is now Newport, a party of white men, portion of the complement under Batman's command, journeyed along the western bank of the Maribyrnong River, through Yarraville to Footscray — in those days familiar to the natives as Iramoo. On their journey, the men met a number of blacks who, although of splendid physique and of a warlike nature, were induced to listen to the overtures of the intruders and the party continued its explorations without hindrance.

Later, Batman journeyed along the river and camped near where the cordite works are located today. Water was discovered and Batman arranged with the blacks for the purchase of the areas abounding Footscray, Melbourne and Geelong.

When the old town hall was being demolished, the foundation stone was found embedded 4 ft. below the ground. Inset was a bottle containing a copy of the 1875 voters' roll of the borough, newspapers and several coins. The stone, which did not bear any inscription, was re-faced and worded as above and placed prominently in front of the new town hall.



Dignity —
Simplicity

Pre-eminent in the working of granite and marble, James Taylor craftsmen endow the most modest piece with dignity and the most impressive memorial with simplicity. Throughout Australia enduring and beautiful memorials stand to their credit. Locally, the war memorials at the Footscray Park and the Goble statue are two of the creations which enhance the reputation of

JAMES TAYLOR & SONS

Monumental Masons

NICHOLSON ST., FOOTSCRAY - Tel. 176 F'scray

On 6th June, 1835, 600,000 acres were "purchased" from the aborigine chiefs, Jaga Jaga, Cooloolock, Burgarre, Yan Yan, Moowhip and Mommaramalar. The deposit paid was 40 pieces of blankets, 42 tomahawks, 130 knives, 62 pairs of scissors, 40 looking glasses, 250 handkerchiefs, 18 sheets and flannel jackets, 4 complete suits and 150 lbs of flour, plus a yearly rental of 50 pairs of blankets, 50 tomahawks, 50 pairs of scissors, 50 looking glasses, 20 suits and 2 tons of flour. This sale was ratified, however, and the land was later divided and settled upon by settlers. When the party returned along the east side of the Maribyrnong they found the mouth of the Yarra, which had been passed unnoticed—and thus was discovered "the site for a village."

With the settlement around Footscray and Melbourne, the blacks were compelled to leave Melbourne at sunset and swim across the river to Footscray. The last tribe, with King Billy as chieftain, camped at a spot below which is now the Footscray Park.

The early settlers in Footscray built their homes from trees felled on the settlement, and which were fenced with ti tree. Their cattle grazed on the area near Barkly Street and Geelong Road.

If our pioneers could rise today, what a glorious revelation it would be to them. Large areas that were bought from the natives for a few tomahawks, looking glasses, etc., have since been sold in Nicholson Street for hundreds of pounds a foot, and where sheep once grazed, a great city has arisen and where, formerly, there was a bridgeless river, now lies five modern crossings for railways and vehicular traffic, with another structure in the course of construction. Great factories with tall chimney stacks belch forth their smoke to the skies, indicative of the internal energy of tons of machinery and human effort of skilled and manual labor. Loud whistles mingle with the grinding of machinery, with clang and clatter rending the air where once the only noise was the rush of the 'roo and the cries of the chase and the wild shrieks and yells of the corroboree.

We owe a great debt of gratitude to our early residents and administrators, who shaped the destiny of this city. Let us ever remember and appreciate those sturdy pioneers.

PIONEERS

Amongst those stalwarts who pioneered Footscray, discovered its features and planned the beginnings of its settlement nearly 80 years ago, were George and Esther Smith. A home was hewn from native trees, and Smith industrially commenced the making of bricks from local clay with the first brick-making machine ever used in Australia. Later, he became one of Footscray's first councillors.

Today, the name of Smith is closely associated with the municipality, in the estate agency of Claude B. Smith, conducted by a son of those worthy pioneers, and first established 30 years ago on the open fields at Seddon.

As a life-long resident, president of the Footscray Historical Society, and returning officer for the Victorian Parliament (Footscray and Williamstown electorates) and justice of peace for 30 years, Claude B. Smith is proud to be associated with the opening of Footscray's handsome new town hall.

● **CLAUDE B. SMITH**
ESTATE AGENT . . . REGD. ARCHITECT
23 BUCKLEY STREET, FOOTSCRAY
and at 48 Pentland Parade, Seddon.

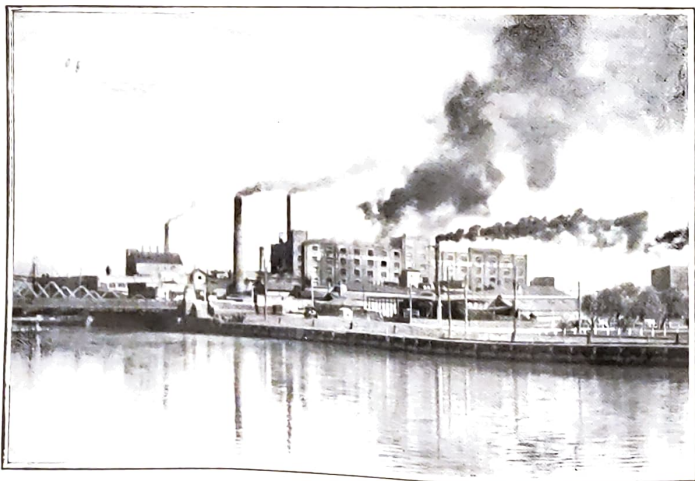
"Et Industria"

YEAR after year sees new achievements, new progress in the maintenance of Footscray's proud position as the paramount industrial city of Victoria.

Primarily an industrial centre, the municipality embraces over 800 factories which give employment to thousands of workers and which have earned the district the title of "The Birmingham of Australia." Huge buildings of modern design rear themselves along the river front, and in the factory zoned area in the western portion of the city, admirably served by road and rail, many new industries have been established. From these progressive works, products circulate throughout the Commonwealth and overseas.

An idea of the variety of industries operating may be gauged from the following processes:—sugar refining, manufacture of rubber tyres, maize products, agricultural implements, engineering gears, rope, twine, gas and electric stoves, towelling, building materials, fibrolite building materials, nails, nuts, bolts, superphosphates for the primary industries of Australia, rubber coats and goods, porcelain, ammunition, wood pipes and casks, joinery, paints and lacquers, wooden boxes, jute. Also located locally are meat exporting works, oil companies, the main terminal station of the State Electricity Commission, flour mills, the tannery works of Michaelis, Hallenstein and Co. Pty. Ltd., marble and stone, saw mills and metallurgical works.

Located within 4 miles of the heart of the capital city of Victoria, linked by water, rail and road, and with huge vacant areas of well-drained land available close to transport facilities, the City of Footscray—industrially—has a future of unlimited possibilities. It is destined to play even a still greater part in the building of a great Commonwealth.



RIVERSIDE FACTORIES

Help to make the City of Footscray the third busiest shipping centre in Victoria.



Specialised Local Service for

CHEVROLET & BUICK

Preston Motors cordially invite all Footscray car and truck owners to inspect their new branch at the corner of Leeds and Hopkins Streets, Footscray.

This service branch is completely equipped with the most modern plant labor-saving tools and experienced mechanics to render first class city service.

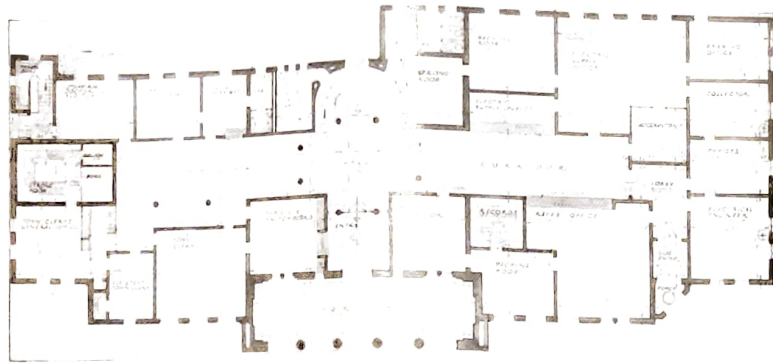
Preston Motors service offers you four distinct advantages:—1. Chevrolet and Buick trained mechanics. 2. Chevrolet and Buick approved tools and equipment. 3. Genuine Spare Parts for the requirements of the trade and public. 4. Lowest prices consistent with quality work.

PRESTON MOTORS PTY. LTD.

GNR. LEEDS and HOPKINS STREETS. Phone: F'scra y. 1206.

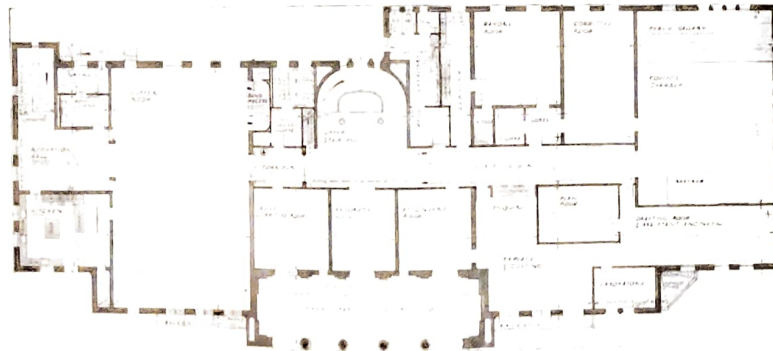
Head Office 104 Russell Street, City.

Plans Illustrating Upper And Lower Floors Accommodation in New Town Hall



GROUND FLOOR:—

Situated to the left of the stairway are the commodious offices for the typistes and the switchboard attendant, town clerk, assistant town clerk, town clerk's staff, health inspector, health department and doctor's and auditor's room. The right wing houses the city valuator, rates' office, electrical engineer, typistes, accountants, collectors, electric supply offices, machine rooms and drawing office.



FIRST FLOOR:—

A feature of the first floor is the assembly hall designed as a supper room for a contemplated, large ballroom. Available for functions, it will hold about 250 dancers. Alongside it are a reception hall and a spacious, well equipped kitchen. Nearby is a committee room and the mayoress' room. At the extreme right is the ornate council chamber, with a Mayor's room and a committee room adjacent. A big portion of the first floor is devoted to the engineer's department, embracing a private office, drafting room, a plan room, laboratory and typistes and costing rooms.

FINE PRODUCTS

Standing symbolically at the gateway to the richly pastured western districts of the State are the largest Chaff Mills in Australia, alongside a new local enterprise that, in 7 years, has established Schutt & Barrie's "CHALLENGE" Brand Flour as a widely-used product of surpassing quality, produced from the finest wheat by the latest processes in modern, hygienic mills.

On the occasion of the opening of the city's new town hall, hearty congratulations are extended to the Mayor and Councillors by—

SCHUTT & BARRIE FLOUR MILLS PTY. LTD.

GEELONG ROAD, FOOTSCRAY.

Tel.: Footscray 963, 334.

Acknowledgements

DESIGNED AND EDITED by
WM. A. JAMIESON.

ADVERTISEMENTS by
"ADVERTISER" IDEAS DEPT.
GEO. PATTERSON PTY. LTD.
SAMSON CLARKE, PRICE BERRY.

PRINTED AND PUBLISHED by
"ADVERTISER" PRINTERY.

PAPER by
TULLIS HUNTER & CO. LTD.

PORTRAITS by
ATHOL SHMITH.
HILDA MITCHELL.
JACK CATO.
WARD SYMONS STUDIOS.

ILLUSTRATIONS by
WILLIAM SADLER.
C. BOTTOMLEY.
F. DANGERFIELD.

BLOCKS by
LYELL-OWEN PTY. LTD.
MODERN REPRODUCTION PTY. LTD.

PORT PHILLIP MILLS PTY. LTD.

is one of the City of Footscray's major industries and are the only mills in Australia operating and specialising solely in the manufacture of wool tops, both merino and crossbred.

Occupying a floor space of over 100,000 sq. feet, these mills consume over 30,000 bales of wool, valued at over £600,000 each year. Noils, waste and scoured and greasy wools are also supplied. Catering principally for the Australian trade, exports are also made to America, China and Japan. Over 250 workers are employed at the head office and mills

MORELAND STREET **FOOTSCRAY.**
Telephones : Footscray 1001 (2 lines).

“Makers of Good Impressions”

THE recent installation of automatic machines, introduction of new, modern type faces, combined with the craftsmanship of technically trained employes, enables the leading printery in the western suburbs to print BETTER.

THIS SOUVENIR was designed and printed by “The Advertiser” Printery, the many beautiful photographs specially taken by “The Advertiser’s” photographer being printed in a new non-scratchable black ink, introduced for the first time by “The Advertiser.” Also used in this production were the latest water-color inks, which retain the richness of their tonings independent of the color of the paper or card used.

WITH an IDEAS DEPARTMENT in association that is an authority on inks, type, blocks, paper, “good impressions” are constantly being designed that satisfy customers as they have a right to be satisfied.

UNDOUBTEDLY, “Advertiser” Printing, manipulated by the hands of skilled craftsmen, who have both a sound knowledge of their trade and an inspiration to work beyond the rule book, is DEFINITELY BETTER.

at your service—



THE ADVERTISER

• **PRINTERY**

236 NICHOLSON STREET
FOOTSCRAY 51.