

CITY OF

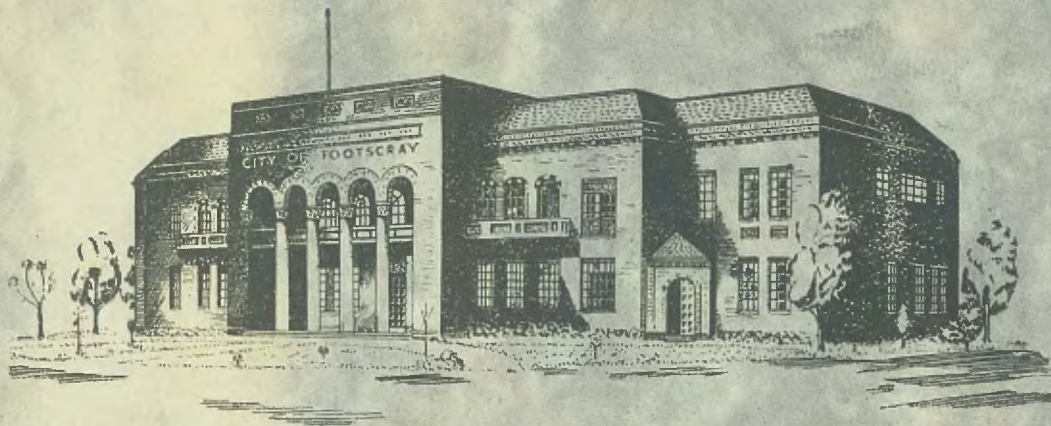


FOOTSCRAY

Souvenir Program

Opening of New Municipal Offices & Chambers
by the Governor, Lord Huntingfield

NOVEMBER 19th - 20th - 21th - 1936



EDWARD HANMER, J.P., MAYOR

OFFICIAL PROGRAM



HIS WORSHIP THE MAYOR, CR. E. HANMER

Introduction . . .

For many years the citizens of Footscray considered that the Municipal Buildings known as the Town Hall were not suitable. Indeed the structure had become unsafe to those who used or occupied it. The people had realised their City had made such progress that the retention of the old Town Hall was quite unjustifiable from any civic or other standpoint.

This unanimity of opinion, however, entirely disappeared when consideration was given the type of new building and the site of the same. Many advocated that there should be a new Town Hall as well as Council Chamber and Municipal Offices, but these people differed in opinion whether the building should be at the existing site or at another. A large number of Citizens refused to admit the need of a public building, but agreed that new Council Chamber and Municipal Offices were needed. They also differed in opinion in respect of the site.

This confusion of thought delayed action for some years. Eventually the Council decided in favor of new Council Chamber, Administrative Offices and Assembly Hall at the same site, the corner of Hyde and Napier Streets. These decisions were embodied in a certain loan proposition, which, when submitted to the people, in pursuance of the provisions of the Local Government Act, presented an opportunity to the ratepayers to veto the same. No petition was received by the Council that a poll be taken and so it was accepted that the people approved of the Council's choice.

Care was taken in issuing instructions relative to the design and lay-out of the buildings, and space was left for the construction of a new Town Hall at any future date. The buildings were designed to satisfy the wants of a modern Municipal Council. The offices were planned to facilitate a convenient and ready transaction of public business, at the same time making possible use of modern office equipment for a more efficient, systematic and economical staff organisation. Rooms are provided for the use of executives of charitable organisations, the Council resolving that the philanthropic work of these committees should be at least recognised by providing them with a meeting room and appointments.

The assembly hall and kitchen adjoining will be available to the public for general use, and should a new Town Hall be at any time constructed this room could be used as a supper room.

This new building, with its Council Chamber, Mayor's Room, Committee Room, Ladies' Auxiliaries Room, Assembly Hall and Municipal Offices, will take the place of a dangerous and inadequate structure. The ambitions of many Footscray citizens will be wholly or partially realised. There will be a new Civic Centre worthy of the importance of the City.

This new Town Hall may appear to some to be too large and costly, but it must be pointed out to them that the Council has built with due regard for the future and not from the standpoint only of the present generation. This building, with its space and expansion possibilities, should well serve the needs of Footscray for very many years to come. It will be possible to provide for any reasonable increase in the administrative staff without expensive constructional costs.

Announcement . . .

The
Entire Furniture
and
Furnishings
for the
NEW FOOTSCRAY
TOWN HALL
were supplied
by
T. H. LAUNDER
Irving Street, Footscray

Story of the New Building

On the 5th August, 1935, the Footscray City Council passed a resolution approving of the final plans and specifications of the new municipal offices. After the city engineer had reported on the estimated cost of the work by day labor, the Council decided to construct the building by this method, and on the 14th October, 1935, adopted the city engineer's report recommending acceptance of the tender of Messrs. A. R. P. Crow to supply the necessary plant and supervision for the erection of the building. Work was commenced on 15th November, 1935.

Occupying the site of the old municipal offices, and bounded by Napier, Hyde, and Lawson Streets, Footscray's new municipal building presents the latest thought in municipal office planning.

The exterior of this modern structure was designed by the architect, Mr. J. Plottel, with a Romanesque feeling, the walls being built of specially selected bricks of variegated color, the colors ranging from browns to red. Buff architectural terra cotta has been used to the main portico, columns, balconies, arches, and elsewhere where accents or color contrasts were necessary.

On passing under the portico, which is the central dominating feature of the building, and through the enriched front doors, one enters the entrance and inquiry lobby, which has the City of Footscray's coat of arms embellishing the mosaic floor.

Revolving doors connect the entrance lobby with the main stair hall, with its black and white marble stairway and bronze handrail leading to the first floor level. Extending to the right and left of the stair hall, but separated by black marble columns, is the main corridor, 14 ft. wide, from which the public have access over the counters to the electric supply department, rates and town clerk's general office.

Subsidiary entrances have been planned at the ends of the main corridor so that the traffic

circulation of the people is regulated at the busiest periods by entry at the main entrance and egress from the side entrances.

Special consideration has been given to the quietening of noise throughout by the laying of noise reducing sub-floors before laying the rubber floors to corridors and other rooms where heavy traffic will take place.

The town clerk's and electrical engineer's rooms, also corridors and counter fronts, are panelled with flush wood panelling of selected grain, and with the flush wood doors complete with bronze kick plates, and the simple furniture, give a quiet dignity to this portion of the building.

Of special interest is the manner with which the architect has formed a point of focal interest at the top of the elliptical main staircase with the erection of Footscray's roll of honor of the men who served in the Great War. At this level corridors connect the council chamber, complete with Mayor's and Mayoress's suites and committee rooms at one end, and the supper room at the other end of the building. With the separate stairway from Hyde Street, the supper room, along with its kitchen and lavatories, may be used for private functions without disorganizing committee or council meetings held in other rooms on the first floor.

The council chamber has been designed with a special ceiling and acoustically treated walls so that during council meetings no noise from outside sources may penetrate into the chamber, whilst people in the public gallery will be able to hear the speaker without annoyance of reverberations.

The city engineer's and building surveyor's offices have been given special consideration. The main office occupies the north-west corner of the building, which will have maximum natural light at all seasons of the year. These offices connect by a door to the council chamber to allow of immediate access to departmental records while Council is sitting. [Continued Page 7



THE MEN WHO CONTROLLED THE CONSTRUCTION

For the past 12 months the men whose responsibility it was to control the vast organisation and expert supervision behind the construction of the building, have had a full size task and the building stands as a monument to their work. A pen picture of the "big four" is appended.

Mr. JOHN GENT.—Far beyond Footscray's boundaries is Mr. Gent known as a sound administrator, an able exponent of Local Government Law and Practice and to be a man of integrity, justifying the trust and confidence which successive councillors have placed in him. As a municipal officer in Ballarat, where he had been educated at the University College and Ballarat School of Mines, Mr. Gent was appointed to his present position as town clerk of the City of Footscray in 1917. He has been largely responsible for the leading of the City through the years of its becoming one of Melbourne's foremost Cities.

Mr. Gent is a qualified town clerk under the Local Government Act, a Licentiate of the Institute of Commonwealth Accountants and an Associate of the Institute of Federal Accountants. He was on the Executive of the Municipal Officers' Association for many years and is a past-President of



MR. A. H. MUNRO

the Victorian Branch of that body.

It was only natural that when the Greater Brisbane Council was seeking a man of outstanding qualifications to fill the position of town clerk of that City, Mr. Gent was in the final selections for the position. Mr. Gent's extensive knowledge of office administration and systems has admirably fitted him for the work of collaborating in the lay-out of the new municipal offices.

Mr. A. H. MUNRO.—Only two weeks after Mr. A. H. Munro was appointed to the position of municipal engineer to the Footscray Council he was asked to report on the cost of building the new municipal offices by day labor. Four weeks later, his recommendation for the method for the execution of the work was adopted by the council and building commenced immediately.

Mr. Munro came originally from the Public Works Department of West Australia. He was educated at Scotch College and later at the University of Melbourne. He holds the degrees of B.A. and M.C.E. of that University. He is also a Licentiate of the Institute of Commonwealth Accountants, and an Associate Member of the Institute of Engineers of Australia.

At the time of his appointment to Footscray he was an engineering assistant with the Melbourne City Council, with whom he had been associated for 8 years. In 1928 the M.C.C. granted him 18 months leave of absence to further his knowledge of civil engineering, town planning and general municipal development. On his return he pioneered in Australia the field of traffic engineering and is well-known for his work in that direction.

Mr. Munro has had the unique experience of supervising, as far as is known, the only municipal office building erected by day



MR. J. PLOTTEL

labor in Australia. In addition, the council adopted his own specification for the furniture and furnishing, which have been supplied and fixed under his guidance.

Mr. J. CARMODY.—Appointed to the position of Electrical engineer of the City of Footscray in 1913, Mr. Carmody has seen the Electric Supply Department grow from an undertaking with a consumption of a few units to that of 32 million units in 1936. He studied electrical engineering under the late Theophilus Draper, Chief Engineer for the Union Electric Company, after which he joined the electrical engineering staff of the Melbourne City Council under Mr. Harper, later Chief Engineer for the State Electricity Commission.

Footscray's electric supply undertaking is looked upon as the one which has shown the best develop-

[Cont. Page 27.]



MR. J. CARMODY

Story of the New Building

—Continued from Page 5.

On the first floor the Mayor's room, council chamber, and city engineer's office, also the corridors, have been panelled in a similar manner to the ground floor rooms. Ceilings throughout have been tinted, and the molds and enriched bands painted in subdued and softly contrasting colors so that the whole of the various suites of rooms form a complete and harmonious unit as a whole.

The three front rooms on the first floor—the city engineer's, Mayoress's room, and ladies' committee-room—all open on to a balcony faced with terra cotta. Provision has been made here by the electrical engineer to floodlight the whole of the vaulted ceiling of the portico.

The lighting constitutes a most important part in the planning of the town hall, designed by the architect in conjunction with the manufacturer, the fittings are 100 per cent. Australian. The metal frames, cast ornamentations, and curved glass panels were all made in Melbourne special for this building.

The beauty and symmetry of the design of the lighting fittings make them a worthy part of a particularly fine building. The special amber glass with which the fittings are glazed provides a perfect diffusion of soft and glareless light with an entire absence of lamp spots.

With the well-laid-out lawns and gardens surrounding this edifice, the police courts and technical school opposite, Footscray has every reason to be proud of its new civic centre.

While it is yet too early to estimate the absolute final cost of the whole building erected and furnished, the last estimate given by the architect was £38,000.

Victoria's Premier District
Newspaper . . .

THE MAIL

Circulating in Footscray
and Western District

Geo. Gordon & Son
PTY. LTD.

The Leading Ironmongers

161-163 BARKLY STREET,
FOOTSCRAY

Tel.: Footscray 49

This firm has been trading in this great city for the last 50 years on a basis of service, civility and quality in General Hardware.

We were entrusted with the supply to the contractors for the New Town Hall of some of the Hardware. We shall be glad to serve the general public everything of first quality connected with our trade. We have the largest assortment of General Hardware in the District.

Try us first if it's Hardware. Here is a district Ironmonger that gives Service!

The Industries of Footscray

More space would be needed than can be given in this Souvenir to describe fully the workings of the Industries. Any visitor, however, may rest assured that he would marvel at the intricate and complex processes to be viewed therein, revealing in an outstanding manner the genius of the Australian Business Captain, the technical knowledge of the Engineer and the Chemist and the skill and strength of the employees.

The following very brief references may illustrate to some extent the variety of articles being manufactured in Footscray:

Electric and Gas Stoves and other cooking appliances—Parkinson Stove Co. (Aust.) Ltd., and Metters K.F.B. Pty. Ltd.

Maize Products Pty. Ltd.—The production of glucose, starch, maize-oil and cornflower from maize grown principally in Gippsland—a striking example of the union of primary and secondary industries.

Barnet Glass Rubber Co. Ltd. and the Olympic Tyre and Rubber Co. Ltd.—Motor and bicycle tyres, rubber coats, golf and tennis balls and many other rubber articles

Co-operative Box Co. of Vic. Ltd.—Oregon timber from Russia and America is made into butter boxes for the dairying and fruit industries.

Australian Wood Pipe Co. Ltd.—Manufacture of wood pipes.

Bunting & Tickell Pty. Ltd. and Mr. J. V. Wheelhouse—Home furnishings.

Commonwealth Fertilizers & Chemicals Ltd.—Super-phosphates for farmers of Australia.

The refining works of the Colonial Sugar Refinery Co. are situated at Yarraville.

Kinnear & Sons Pty. Ltd.—Ropes and twine.

Michaelis, Hallenstein & Co. Pty. Ltd.—Largest tannery in the Southern Hemisphere.

Port Phillip Mills Pty. Ltd., Victoria Woollen Co. Pty. Ltd., Airedale Weaving Mills Pty. Ltd., and Cosmos Knitting Mills Pty. Ltd.—Woollen mills and factories for the making of woollen goods.

Dickie Pty. Ltd.—Towelling.

Australian Porcelain Insulator Co. Pty. Ltd.—This works supply insulators for the State Electricity Commission of Victoria.

Laughton's Pty. Ltd., and Mephan Ferguson Pty. Ltd.—Iron works, baths, sinks, cast iron pipes, etc.

Mitchell & Co. Pty. Ltd., Gibbins Farm Implement Co. Ltd., Barrow Bros., Bishop's Implements Pty. Ltd.—Agricultural implements and machinery.

Richardson Gears Pty. Ltd.—Gears of all kinds.

V. Richardson & Sons Pty. Ltd.—Perforated metals and air-conditioning.

Hardie Trading Co. Pty. Ltd.—Lacquers, paints and varnishes.

James Hardie & Co. Pty. Ltd.—Asbestos fibrous plaster.

Ammunition Works of the Commonwealth.—Small arms, shells and ammunition.

W. Angliss & Co. Pty. Ltd.—Largest meat industry in the Southern Hemisphere, now operated by Vesty's Pty. Ltd.

Jas. Taylor & Sons, Mintaro Slate & Flagstone Co. Ltd., Footscray Monumental & Marble Co. Pty. Ltd.—Marble cutting and monumental works.

Colonial Gas Association Ltd.—Manufacturers of duratenax and coal-tar by-products.

Fleming & Co. (Aust.) Pty. Ltd.—Breakfast foods. Standard Quarries Pty. Ltd. and Kingsville Quarries Ltd.—Stone quarries and masonry.

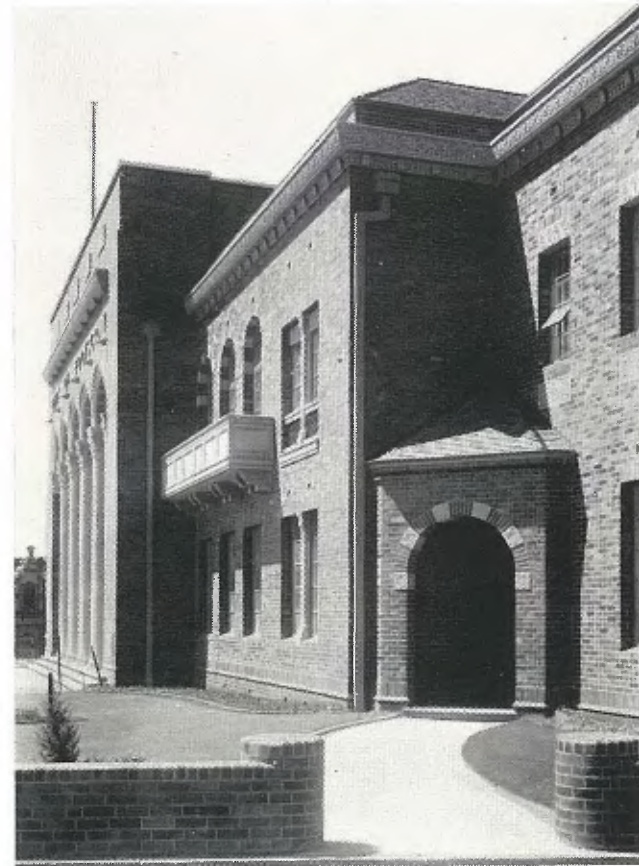
J. R. Bell & Co.—Makers of nails and wire netting.

W. H. & S. Massey—Motor engineering.

G. Mowling & Son Pty. Ltd.—Soaps and candles.

G. Bramall & Co.—Rubber coats, etc.

Allen & Grimwade.—Pattern makers.



The building viewed from Lawson Street, showing the entrance to the electric supply department.



The view, from Hyde Street, shows the entrance to the public assembly hall.

The Colonial Mutual Fire INSURANCE COMPANY LIMITED

Departments of Business:

- Fire, Plate Glass, Marine, Motor Car, Personal Accident & Sickness, Burglary Fidelity Guarantee, Workers' Compensation, Householders Comprehensive and all Agricultural Risks.

THE COLONIAL MUTUAL IS NOTED FOR PROMPT SETTLEMENT OF CLAIMS

Lowest Current Rates on application to the Company's Office.

405 COLLINS STREET, MELBOURNE
Phones Central 3413 (5 Lines)

or Local Agents

ALL STRUCTURAL STEELWORK

Supplied by—

EDWARD CAMPBELL & SON

PTY. LTD.

STRUCTURAL STEEL ENGINEERS

114 Victoria Street, Carlton
N.3

Phones: Office, F 1126 (3 Lines); Works, F 2916.

—THE—
FIBROUS PLASTER CEILINGS
—and—
SYNTHETIC STONE WORK

—of the—

CITY OF FOOTSCRAY MUNICIPAL CHAMBERS

were supplied and erected by

W. H. BRILLIANT & CO.

PROPRIETARY LIMITED

Reg. Office: 88 ALBION ST., ESSENDON, W.5. Tel. F.U. 5733



The Latest Advance in Public Hall Seating

AS SUPPLIED TO FOOTSCRAY AND OTHER
 TOWN HALLS



Lincoln Patent Folding Hall Chairs

Built for comfort . . . Lock when folded . . .
 Stacking space saved . . . A model for every
 purpose . . . Pat. No. 1526/31.

Messrs. WINTER BRADLEY & CO.

Seating Specialists.

562 BOURKE STREET, MELBOURNE, C.1, VIC.

'Phone: Cent. 6554.

SAND ————— SAND

RAE and LYON

CARNARVON ROAD, ESSENDON

Cartage Contractors

All classes of Building
 Sand, Concrete Sand,
 Gravel, Garden Loam.

DELIVERED ANYWHERE AT REASONABLE
 PRICES

Give FU 5085 a Ring for Quotes!

DESCRIPTION of ILLUSTRATIONS

The top picture on Page 10 depicts the founda-
 tion stone, laid on February 22, 1936, situated at the
 base of the brick pier at the right of the portico,
 while at the foot of the page is the stone from
 the old building, which has been given a place of
 honor alongside the new stone. The centre picture
 is a "shot" from the kitchen, an annexe from the
 assembly hall, for the use of caterers at public
 functions.

On this Page the pictures show: Top—the en-
 trance to the city engineer's department; centre—
 One of Footscray's big industries, the Colonial Gas
 Association works, with its spacious gardens;
 below—the interior of the councillors' retiring
 room.



The timber, floorings,
 etc., of this Hall were
 supplied by



THE JUNCTION JOINERY & TIMBER MILLS

PTY. LTD.

Geelong Rd., Footscray, W.11

'Phone F'cy 494-495

Support an Australian Industry . . .

BY USING

"DURATENAX"

It Builds Better Roads

Gives Uniformly
Even Texture,
Non-Skid and
Non-Glare Sur-
faces.

●
Reduces
Construction
Costs



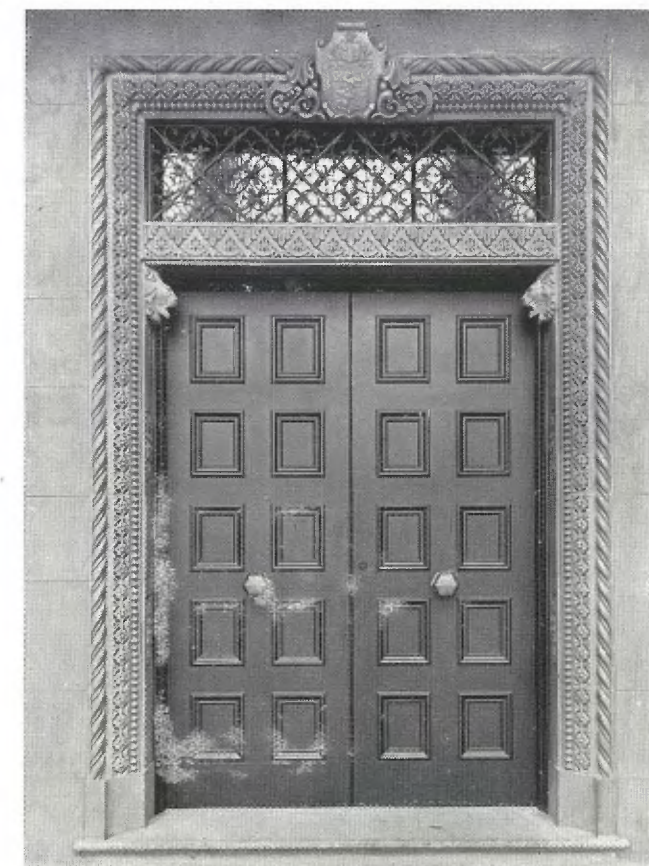
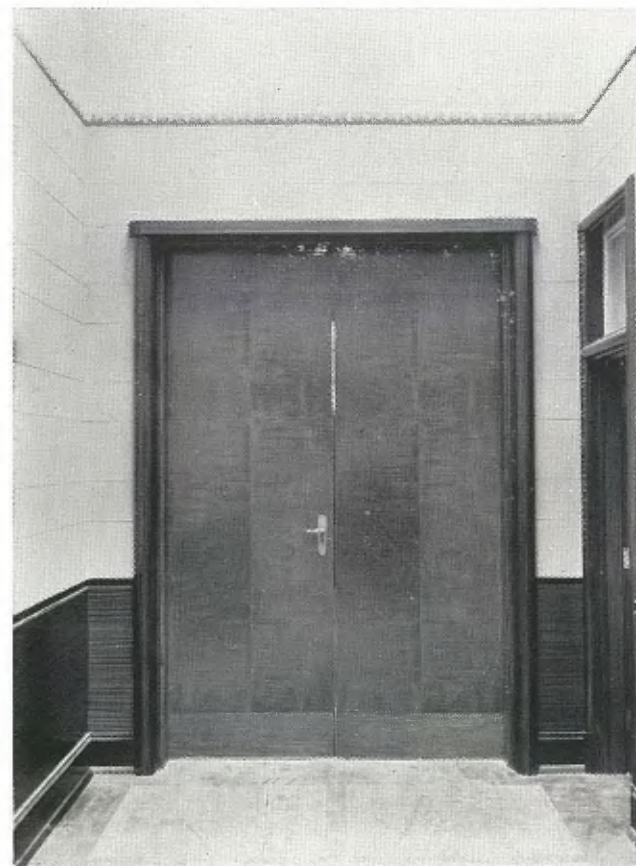
Grades for all
Purposes. Pre-
mix Drag Sheet-
ing and Surface
Coatings.

●
Reduces
Maintenance
Costs

A MODERN "DURATENAX" ROAD

DURATAR PTY. LTD. - - FOOTSCRAY

'Phone: Footscray 99



These doors give an indication of the dignified beauty of the building. On the left is the main entrance to the council chamber. The grain of the flush panelled maple is one of the finest specimens in Melbourne, while on the right the bronze finish of the external doors harmonises with the exquisite design of the terra cotta architrave.

●
The general plastering
throughout this mag-
nificent building was
carried out by

**PICTON HOPKINS
& SON**
PTY. LTD.

●
Plaster Craftsmen

●
265a Bridge Road, Richmond

Telephones: J2169, J2160

GAMLIN & METES
PTY. LTD.

SUPPLIED THE

**STEEL
WINDOWS**

for the

Footscray Town Hall

because the demand
was for the

HIGHEST QUALITY

EMOLEUM

The
Greatest of
Road Emulsions

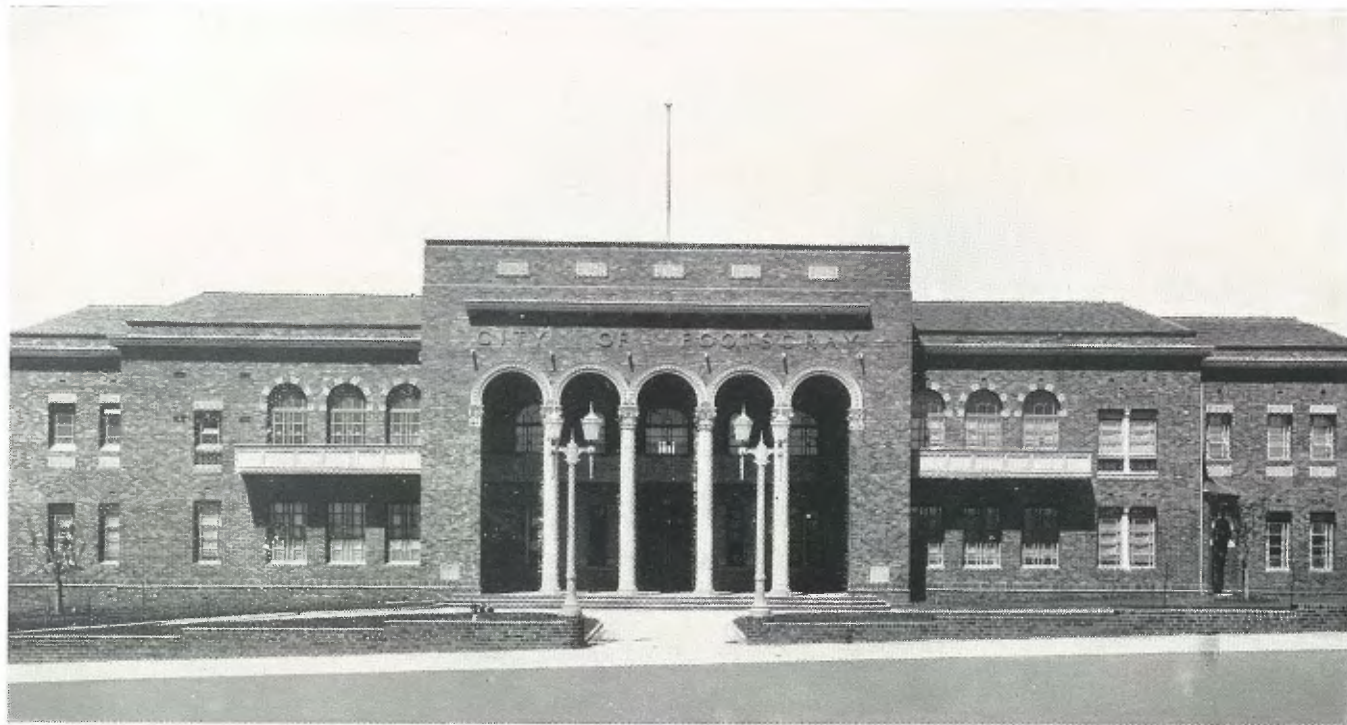


Spraying Emoleum on
Napier Street in front of
New Town Hall, Foot-
scray.

EMOLEUM (Australia) LIMITED

NORTH MELBOURNE, N.1.

Telephone: F 5143



The Romanesque feature of the portico is beautifully brought out in this front elevation of the building. The ornamental light standards at each side of the entrance form a striking decoration and between the centre portico may be seen an example of the interior decorative lighting. The liberal garden frontage is already transformed into a beautiful lawn, with specialised shrubs well grown.

Confidence!

No City can progress without the confidence of its citizens and this splendid attribute is strikingly demonstrated in Footscray's community life.

May I use this great civic occasion to express my confidence in the future of our thriving city; and it is with gratification that I look back upon my 23 years' activity as a builder, during which time I have erected 650 homes within the municipality.



A. HANSEN

Builder

GEELONG ROAD,
WEST FOOTSCRAY

'Phone: Footscray 530

Well Appointed Apartments

IN the old Town Hall, staid and grey with solid blue-stone walls and unimpressive entrance, the Mayoress and those women's auxiliaries who had been granted the use of a room in the civic structure for their meetings, were not treated very well in the way of accommodation. Meetings were held in the Mayoress' room, which was a chilly and very plain affair, round which stiff chairs were placed in lines, and which was decorated in cold and uninspiring colors.

It was certainly not the kind of room into which a Mayoress could invite her friends, or fellow workers, and feel that she was entertaining them in a friendly or pleasant atmosphere.

* * * * *

BUT in the New Town Hall all is changed. The Mayoress of the future will have a delightful room in which to entertain, a room moreover, in which she will be pleased to spend much time, for it is charmingly decorated, and well-appointed.

It is in a perfect position in the building, for it is at the top of the graceful elliptical-shaped stairway, and opens with long windows on to a balcony.

This balcony, which is behind the Corinthian pillars which guard the front entrance to the hall, has quite a pleasant view. It looks out over the green lawns and the wide sweep of trim gravel paths in front of the hall

to the well-built Court House opposite in Napier Street, and though it also affords a good view of the railway lines—never inspiring except to those who love every aspect of travel, even to lines of cold steel stretching away into the distance—this hard view is softened by a glimpse of the garden plot which has been made in the corner of land between the Court and the railway.

The room is a symphony of cream and green. Soft cowslip yellow tinted walls have a narrow raised frieze of shaded apple green color. The heavy chenille curtains at the long windows repeat the fresh green tone, and the floor is covered with a carpet mottled in tones of beige, brown and green.

The comfortable suite of chairs and couch is covered in tapestry in the same tonings. There is an attractive writing desk where the Mayoress can attend to her correspondence, and some small tables for general use. A telephone can be plugged in. The room is heated by hot pipes.

* * * * *

NEXT door to this dainty room is the committee room, where auxiliaries will hold their meetings. It has the same creamy walls as in the Mayoress' room, and though its furniture is necessarily of a business-like kind, it manages to give itself a distinctly feminine air.

[Continued Page 22

Wm. **BEDFORD** LIMITED

476-490 Lt. LONSDALE ST., MELBOURNE

Phone F 2696 (3 Lines)

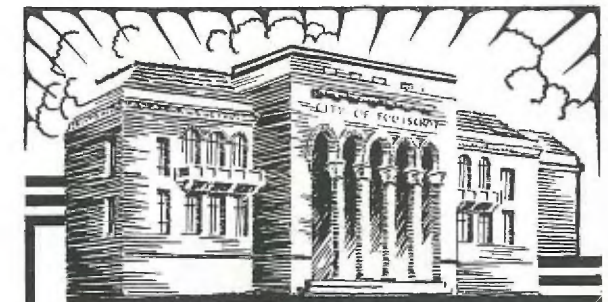
Manufactured and Supplied—

- Bronze Elliptical Balustrade.
- Chrome Plated Bronze Handrail (rear stairs)
- Bronze Counter Grilles
- Bases to Metal Columns
- Wrought-Iron Ornamental Rust-proof Grilles
- Wrought-Iron Fencing
- Metal Door and Window Furnishings
- General Hardware Throughout.

To the exclusive design and specification of J. PLOTTEL, Esq., F.R.A.I.A.

Also supplied (as agents for The Beeston Boiler Co. Ltd., Nottingham, England)—Sectional and Domestic Boilers—Beeston No. 4 Panel Radiators.

For NEW FOOTSCRAY TOWN HALL



FOOTSCRAY TOWN HALL

HAS A ROOF OF

**WUNDERLICH
TERRA COTTA
SHINGLE TILES**

AND A FACADE TRIMMED WITH

**ARCHITECTURAL
TERRA COTTA**

MANUFACTURED BY

WUNDERLICH LIMITED

210 HANNA STREET, 5TH, MELBOURNE

'Phone: M 1261 (3 lines)

OFFICIAL PROGRAMME

.. of ..

CEREMONIAL OPENING OF THE NEW TOWN HALL

Order of Proceedings

Thursday, November 19, 1936

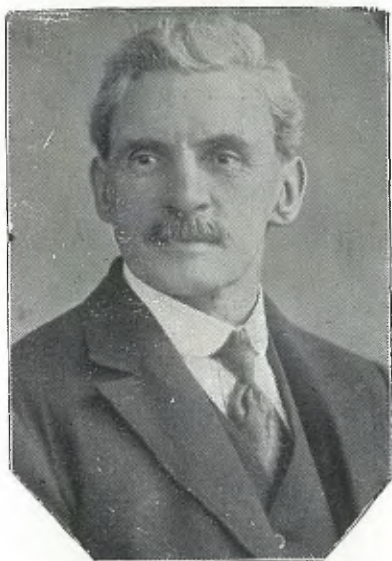
2.45 p.m.—His Worship the Mayor and the Mayoress of the City of Footscray (Cr. and Mrs. E. Hanmer), Members of Parliament, Councillors of the City and their Wives will assemble in front of the new Town Hall.

3.0 p.m.—His Excellency the Governor of the State of Victoria and Lady Huntingfield will arrive. His Excellency will inspect the Guard of Honor provided by the 32nd Battalion. His Worship the Mayor will receive His Excellency and after introductions, request the Town Clerk to read the address of welcome from the Council of the City of Footscray. The Mayor will then request the Architect, J. Plottel, Esq., to hand to His Excellency the Gold Key as a memento of the occasion. Lord Huntingfield will unlock the main door and declare open the Building. After inspection of Offices on the ground floor the Official Party will proceed upstairs.

3.30 p.m.—Special Meeting of the Council of the City of Footscray. Business: To pass a vote of thanks to His Excellency and Lady Huntingfield. The party will be invited by the Mayor and the Mayoress (Cr. and Mrs. E. Hanmer) to partake of afternoon tea in the Mayor's Room.

8.30 p.m.—Representatives of the Footscray Branch of the A.N.A. will switch on the lights of the electric standards presented to the City of Footscray to commemorate the Jubilee Year of the said Branch. His Worship the Mayor will accept the gift on behalf of the City.

CITIZENS ARE GIVEN A
GENERAL INVITATION TO
INSPECT THE BUILDING.



The Mayor, CR. E. HANMER

The Special Meeting in the Council Chamber will be broadcast



LORD HUNTINGFIELD

Friday, November 20, 1936

2.30 p.m.—The Mayor and the Mayoress, Cr. and Mrs. E. Hanmer, will receive invited Official Guests. Entrance Main Door, Napier Street. Guests will proceed to inspect the Building, and then be seated in the Assembly Hall.

3.15 p.m.—Musical Programme as follows:

SONG—"Invitation to the Waltz" GLADYS RICHARDS
RECITALS—Humourosities that are Different HARCOURT FRENCH
SONG—"The Changing of the Guard" HAROLD MURPHY
SONG—"Call of Spring" GLADYS RICHARDS
RECITALS—Humourosities that are Different HARCOURT FRENCH
SONG—"Wand'ring the King's Highway" HAROLD MURPHY
Anzac House Orchestra will render Selections during the afternoon,
Accompanist: STAN SEDDON DON BANKS, Conductor

4.15 p.m.—Afternoon Tea. Returned Soldiers' Orchestra.

7.30 p.m.—The Mayor and the Mayoress, Cr. and Mrs. E. Hanmer, assisted by Councillors and their wives, will receive and welcome visitors. Orchestral music in Assembly Hall.

Saturday, November 21, 1936

2.30 p.m.—The Mayor and Mayoress, Cr. and Mrs. E. Hanmer, will receive and welcome elderly people (over 65 years of age). Admission at main door, Napier Street, to holder of Cards previously obtained at the temporary Municipal Offices, Cnr. Albert and Paisley Streets.

3.30 p.m.—Afternoon Tea. Orchestral music.

7.30 p.m.—Town Hall open to the Public. The Mayor and the Mayoress, Cr. and Mrs. E. Hanmer, assisted by Councillors and their wives, will receive and welcome visitors. Orchestral music.



The Mayoress, MRS. E. HANMER.

The Hyde Street State School Boys' Band will be in attendance.

The Queensland Maple Flush Panelling, Joinery Work and Doors in this Building, demonstrate the ability of our Firm to manufacture high quality wood-work.

The many examples of our work, spread throughout the Commonwealth and Overseas, reflect our 40 years' experience in wood-working of all kinds.

20 years ago we manufactured the Honour Board in this Building and 15 years ago, the Mayor's Chair and the Desks in the Council Chamber. The value that the Footscray Council place upon them is shown in their re-use in the new Building.

•
*For Good Furniture,
 Fittings and Joinery
 Work.*

H. GOLDMAN LTD.

(at Church Street Bridge)

•
 CHAPEL ST., SOUTH YARRA, S.E.1

Tel. Windsor 8118, 8119

REASONS FOR
 THE SELECTION OF

"LIGNOLEO"
 JOINTLESS FLOORING

● In the new Footscray City Hall, and also in hospitals, factories, hotels, schools—in fact, everywhere where a comfortable but enduring floor surface is required the choice is more and more for trouble free "LIGNOLEO."

For "LIGNOLEO" is not only hard wearing and economical. It combines with its durability a most attractive non-slipping surface that can be polished and scrubbed to a spotless cleanliness and a brilliant lustre.

"LIGNOLEO" is the perfect surface for every purpose!

Available in wide range of standard colours. Wearproof and waterproof. Oil-impregnated wood . . . soft underfoot, but very durable. Jointless. Can be up-swept at walls and corners to eliminate all dirt and dust traps, cracks, etc. Not expensive to use . . . and first cost is last cost.

E. L. YENCKEN & CO.

PTY. LIMITED

384-396 LITTLE COLLINS STREET,
 MELBOURNE, C.1.

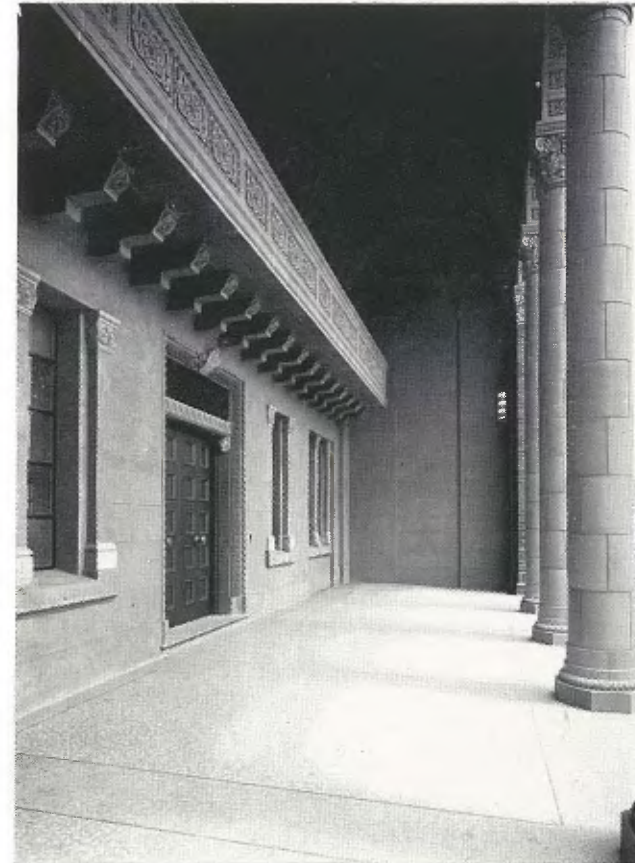
Telephone: Central 2712

*Commonwealth Fertilisers and
 Chemicals Limited*

● The development of Yarraville, South ward of the City of Footscray, is closely linked with the growth of the heavy chemical industry. In 1872 the factory of Cuming, Smith & Company was established for the manufacture of acids and chemicals, and later, super-phosphate and other fertilisers.

● Some years later, the factories of Wischer & Co. and the Mount Lyell Chemical Works were established, in rotation, for the manufacture of similar products. In 1929, the three manufactories, together with Federal Fertilisers, were amalgamated under the name of Commonwealth Fertilisers and Chemicals Ltd., to form the largest producers of fertilisers, agricultural and industrial chemicals in the Southern Hemisphere. The factories now occupy an area of 70 acres at the Saltwater River frontages.

● The employes of the Company include many local residents of long standing, who have spent a great portion of their lives in association with the works of the present and former Companies comprising Commonwealth Fertilisers and Chemicals Ltd.



The left side picture brings out the artistic treatment in terra cotta of the interior of the portico, showing the balcony adjoining the three front rooms on the first floor. The picture on the right was taken from this balcony. The beautiful work in the terra cotta arches, the corinthian columns and the vaulted ceiling are admirably illustrated.

A. R. P. CROW & SONS Pty. Ltd.

Master Builders and Contractors

In acting as supervising contractors to the City of Footscray for the erection of the new Municipal Offices, have added yet another important structure to the many already erected by them.

A. R. P. CROW & SONS, IN ADDITION TO THE ERECTION OF ALL CLASSES OF BUILDINGS, SPECIALISE IN THE FOLLOWING:—

- CHIMNEY STACKS
- BOILERS
- BRICK KILNS
- FURNACES

AND ALL TYPES OF HEAT GENERATING UNITS.

REGISTERED OFFICE:

11 BERRY STREET, YARRAVILLE

'Phone: Footscray 1050



STEEL OFFICE EQUIPMENT

Manufactured and Supplied by

WEICKHARDT

and CO.

FOOTSCRAY

Phone: Footscray 233

- PLAN FILES
- FILING CABINETS
- "OWL SIMPEX" FLAT FILING
- "OUTEX" VISIBLE SYSTEMS
- SHELVING AND STORAGE
- MACHINE POSTING TRAYS

*Demonstration and Advice
with pleasure*

NUTMAN SYSTEMS PTY. LTD.

MILLER HOUSE

359 LITTLE COLLINS STREET, MELBOURNE

Phones: C 11200; C 11201.



CINDCRETE BRICKS . . .

were used throughout the new Footscray City Hall as nailing blocks for fixing all interior woodwork.

Write or telephone us for particulars of this excellent, economical & thoroughly proved fixing method.

Specify "**CINDCRETE**"

Registered Patentees and only manufacturers

CINDCRETE BRICK CO.

(Swanton & Barrett Pty. Ltd.)

INGLES ST., PORT MELBOURNE, S.C.7.

Telephone: M 2704

DESCRIPTION of ILLUSTRATIONS

At the top of Page 20 is a picture from the main stairway of the marble columns and specially designed ceiling, above the first floor annexe and adjoining the honor board. The revolving door inside the main entrance is illustrated in the other picture. It is constructed in maple and stands on the tiled entrance in the centre of which is the city's coat of arms in mosaic.

The illustration on this page shows the kitchenette, which will be extensively used by auxiliaries. It is placed directly opposite the women's committee room.



C. EBELING & SONS Pty. Ltd.

Established 1885

Marine and General
Engineers

Iron and Brass Founders
Washer Manufacturers

Contractors to:

State and Federal Governments
also Municipalities and Shires

Works:

70-82 STEPHEN ST., YARRAVILLE

Registered Office:

1 CASTLEMAINE ST., YARRAVILLE

Phone: F'otscray 22 (2 lines)

STANDARD QUARRIES PTY. LTD.

MASONRY CONTRACTORS
QUARRY MASTERS

SUPPLIED THE BLUESTONE
SCREENINGS USED IN THE
CONSTRUCTION OF THE NEW
FOOTSCRAY TOWN HALL.

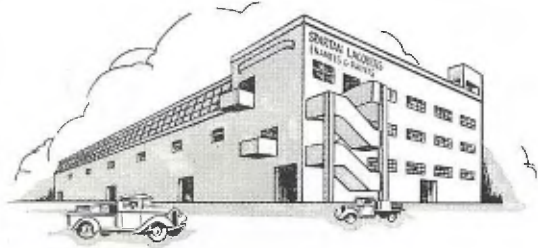
Office, Quarry & Works:

WEARING ST., FOOTSCRAY, W.11.

Tel.: Footscray 1111

SPARTAN PAINTS, VARNISHES, LACQUERS, STAINS

Manufactured by Victoria's Largest and Most Modern Factory for the Production of Technical Finishes.



For Full Particulars, Apply—

Hardie Trading Pty. Ltd.

Factory: GRAINGER'S RD., W. FOOTSCRAY

● The complete Electrical Installation of the Footscray Town Hall was carried out by - - -

Oliver J. Nilsen & Co.

PTY. LTD.

Electrical Engineers and Contractors

VICTORIA'S LEADING ELECTRICAL ENGINEERS

FOR ALL TYPES OF:

- ELECTRICAL INSTALLATIONS
- SWITCHBOARDS-SWITCHGEAR
- TRANSFORMERS
- MOTOR REPAIRS

Always at Your Service

45-47 BOURKE STREET — MELBOURNE

'Phone 572 (4 Lines)

WELL APPOINTED APARTMENTS

—Continued from Page 15.

So that the ladies who work for the various auxiliaries will be able to provide afternoon tea or supper with the minimum of trouble, a charming kitchenette has been fitted up just opposite the committee room. Tiled in cream, picked out with apple green, this kitchenette is something to make the mouths of housewives water with envy. The gas hot water urn and stainless steel sink, fitted with hot and cold water taps, is hidden in a cupboard, when not in use. Beneath the sink is a number of useful cupboards.

Off this room, which is also equipped with several commodious built-in cupboards for crockery, etc., is a well-appointed wash-room for the use of the ladies.

THESE quarters will cater for the Mayoress, wives of councillors, and auxiliary workers. The other part of the building which is of interest to women, is also situated in the upstairs wing of the Town Hall, but is entered from Hyde Street.

For the first time, this end of the building presents an interesting and attractive exterior to the public gaze. Two short flights of steps with iron hand-rails lead to a minute platform, from which the hall is entered by a graceful doorway. The stairs which wind up to the banquet hall (which will be let for dances, socials, weddings, etc.), are paved in marble effect, and the banquet hall is entered by wide doors of ornamental frosted glass inlet in polished maple frames.

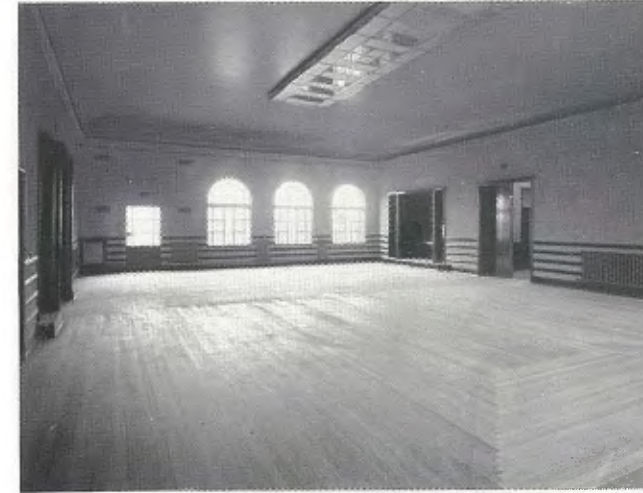
THE banquet hall will be a lovely setting for colorful evening gowns and wedding finery. It is spacious and has the most modern type of ventilation. The walls are colored a light beige, in sand-paper finish, and the ceiling is painted to shade from a light cream to deep beige. A raised, ornamental frieze in green and gold is a splendid finish. An unusual and decorative design in overhead, indirect lighting is used in this hall.

Inlet in one side of the room is a little alcove for orchestras, complete with spacious cupboards for their music. The present Mayoress, Mrs. E. Hanmer, has donated a piano for this alcove, which makes a charming addition to the decoration of the hall.

THE kitchen, which opens off the banquet hall, is a caterer's dream. Painted in spotless white, it is usefully appointed with plenty of cupboards, some with specially ventilated doors, others with sliding doors. Two enormous stainless steel sinks with grooved draining boards will make washing up for hundreds a mere nothing.

Large taps will give a continual flow of boiling water, and in addition to a hot water urn, there is a special coffee urn, and another for milk. A hot plate oven will be of great use when a hot supper or dinner is being served. A telephone has been installed in the kitchen for the convenience of caterers.

CLOAK rooms for the use of patrons of the banquet hall are constructed on the latest lines, and repeat the note of good taste which is reflected throughout



The photograph shows the interior of the banquet hall, with semi-glazed windows at the far end; the orchestra alcove, main entrance doors from the corridor on the right and entrance from Hyde Street on the left. The lighting unit shown in the ceiling has been artistically designed on the most modern lines, while the floor is the latest in ballroom construction.



The Mayoress' room viewed from the balcony. The flush panel maple doors give access to the main first floor foyer and staircase.



Interior of the electrical engineer's office. Special features are the horizontal flush maple panelling and the simple modern and artistic design of the office furniture, which harmonises with the color scheme of the room.

THE Inter-Office Telephone System

INSTALLED IN THE NEW TOWN HALL IS THE FAMOUS

STROWGER AUTOMATIC

Manufactured by The Automatic Electric Co. Ltd., the originators of Automatic Telephony and the main suppliers of Automatic Equipment to the Post Master General's Department.

AGENTS:

The Lawrence & Hanson
ELECTRICAL CO. LTD.

172-6 WILLIAM STREET — MELBOURNE
Telephone: Central 10394 (6 lines)

MANUFACTURERS & IMPORTERS

- Sheet Lead, Pure Tin Pipe, Compo, Soil and Lead Pipe, Glazing Lead, Lead Traps, Bends and Offsets, Patent Hardened and Magnetic Chilled Shot.

WALTER COOP

217-219 LATROBE STREET
MELBOURNE, C.I.

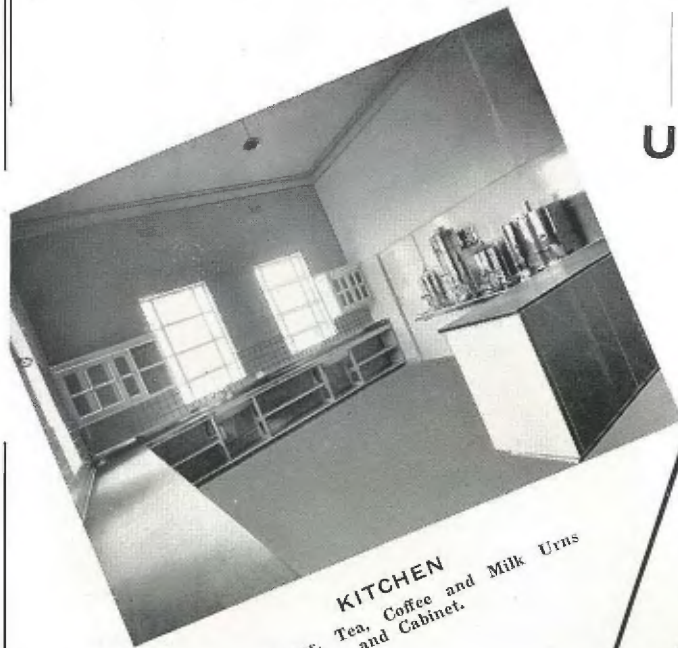
'Phone: C 1134

FACTORY: KNOX PLACE, MELBOURNE.
Branches at Clifton Hill, Melbourne, Victoria, and Redfern, N.S.W.

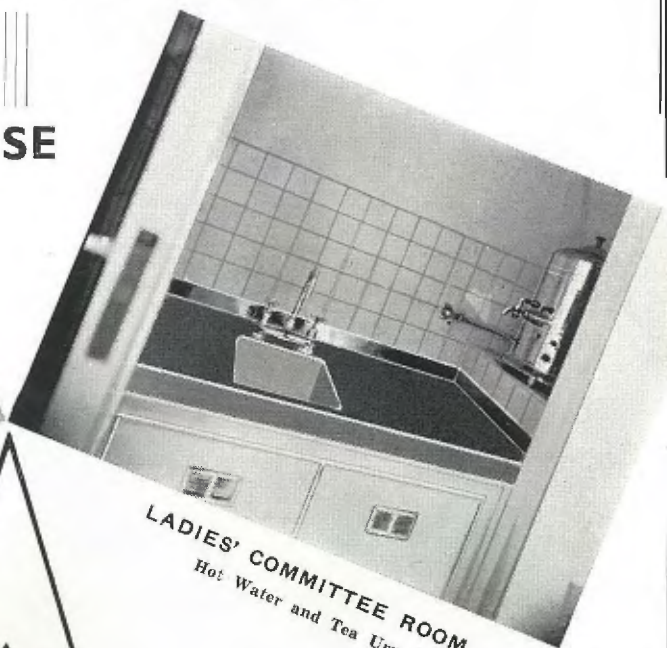
GAS is SUPREME

FOOTSCRAY MUNICIPAL OFFICES

USE



KITCHEN
Hot Water, Tea, Coffee and Milk Urns
and Cabinet.



LADIES' COMMITTEE ROOM
Hot Water and Tea Urn.



Speed GAS

gives the maximum Heat at once. There is no waste of heat or time.

Perfect
COOKING
by Regulated Heat means real economy in time, labor and money.

CALL IN AND INSPECT AT OUR SHOWROOMS

THE COLONIAL GAS ASSN. LIMITED
FOOTSCRAY and WILLIAMSTOWN

PARKS and RESERVES

The Parks and Reserves of the City of Footscray have, in recent years, been considerably augmented, especially the most important, such as the Footscray Park, the Yarraville Gardens, and the Footscray Oval.

FOOTSCRAY PARK.

Footscray Park (approximately 37 acres) is of particular interest, chiefly on account of its fine representative collection of trees and shrubs.

The Park faces the picturesque valley of the Maribyrnong River. Shade trees and extensive sloping lawns, the now famous Lilyponds, with their interesting rock gardens, add considerably to the charm of beautiful surroundings and attract to the district numerous visitors.

At the main entrance is situated the Citizens' War Memorial. Between this statue and the Byron Moore Band Stand is the Memorial erected by the returned soldiers and sailors.

A well-equipped playground is provided for the younger folk, and the important sporting interests are well provided for on the spacious areas at the foot of the Park.

YARRAVILLE GARDENS.

The Yarraville Gardens, with its new adjunct, the Hanmer Reserve, constitutes an attractive rendezvous for residents of the South Ward. Hanmer Reserve is beautified by plantings of trees and shrubs, and neat lawns. An additional charm here is the fine ornamental rock seats dedicated to citizens.

KINGSVILLE PARK.

Kingsville Park (11 acres) is situated in the Kingsville Ward, a new area which is certain to become an important centre of sport. A notable addition here is a quarter-mile cycling track.

RAILWAY RESERVE.

The Railway Reserve (approx. 4 acres) has been considerably improved and several minor allotments in various parts of the City have been beautified by judicious plantings of ornamental shrubs, and the laying down of lawns.

THE OVALS.

Major improvements have been completed at the Western Oval and the Yarraville Oval.

TREE-PLANTING.

Trees have been planted in many streets, and the most important of these plantings, the Geelong Road Plantations, between Ormond Road and Ballarat Road, have been completed.



For Harmony of Colour

**PERMANENCE
and RESILIENCE**

The unique combination of charming colour with great durability makes **Barnet Glass Rubber Floor Covering** ideal for Municipal Buildings, Hospitals, Theatres and Churches. Because of its resilient and shock absorbing qualities, it minimises noise—and, in addition, is hygienic, waterproof and easily cleaned.

● Over 400 square yards of *Barnet Glass Rubber Floor Covering* have been laid in the public sections of the new *Footscray Municipal Offices*. Its brown and biscuit variegated pattern with plain brown borders adds a dignity and charm that no other flooring could attain.

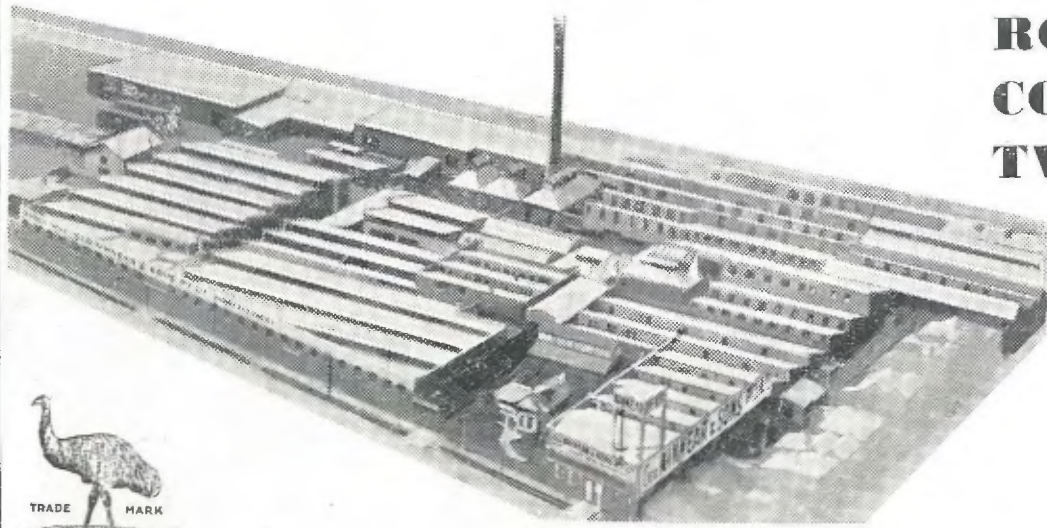
Barnet Glass

**RUBBER
FLOOR
COVERING**

OVER 60 YEARS of PROGRESS

... AND STILL GROWING. MAKING

"EMU" ROPE CORDAGE TWINES



EMU BRAND
Factory at
Ballarat Road,
Footscray, Vic.



GEO. KINNEAR & SONS PTY. LTD. 114 King St., Melbourne, C.1.

Phone Central 5372 - Telegrams "ROPE" Melbourne

B-R-C

CONCRETE REINFORCEMENTS FOR ROADS AND STRUCTURES

B.R.C. FABRIC ENSURES THE MAXIMUM STRENGTH AND UTILITY, AND IS FAR SUPERIOR TO ANY OTHER TYPE. BEING PRACTICALLY INDESTRUCTIBLE, IT WILL LAST INDEFINITELY. MAKE SURE YOU USE B.R.C. FABRIC FOR ALL CONCRETE WORK IN THE CONSTRUCTION OF ROADS AND FLOORS.



MADE IN AUSTRALIA BY

A. R. C.

ENGINEERING CO. PTY. LTD.,
430 LITTLE COLLINS STREET, MELBOURNE.

Also makers of
Weldmesh Electrically Welded Fence

The Men Who Controlled The Construction . . .

[Cont. from Page 6.]

ment and administration and is next in importance to that of Melbourne City. Mr. Carmody's influence with the State Electricity Commission, and his foresight and acute business acumen, have been responsible for this uninterrupted development. As the most experienced engineer of Melbourne electric undertakings, other cities have looked to him, not unsuccessfully, to protect their interests with the State Electricity Commission.

It is well known that the late Sir John Monash had a high opinion of Mr. Carmody's ability and integrity. Although the progress of his department has demanded so much of his direction and energy, he has been a member of the Footscray Technical School Council since its inception.

In the administration of the Electric Supply Department, Mr. Carmody has introduced methods which are as up-to-date as many overseas. He was responsible for the agreement with the State Electricity Commission being made for 10 years instead of 5 years. This situation was fortunate for Footscray, actually meaning an advantage of over £10,000 a year for 5 years.

The lay-out for this Department in the new Municipal Offices is Mr. Carmody's own design and will add to the efficiency of an already highly specialised equipment.

Mr. J. PLOTTEL.—Mr. J. Plottel, F.R.A.I.A., architect for the new Municipal Offices at Footscray is an Englishman by birth who has been resident in Melbourne since 1907. Previous to this he was in South Africa for three years. He has been responsible for the erection of many large buildings all over Victoria during the past 25 years, totalling approximately £2,000,000 worth, and was instrumental in the establishment of the Maize Products Pty. Ltd. and associated companies in Footscray, and is a director and large shareholder in the same.

He built that company's buildings as well as the Barnet Glass Rubber Co.'s works, which were remodelled and rebuilt entirely under his supervision. He is at present engaged in the extension of Michaelis, Hallenstein's works.

Mr. Plottel has carried out many other works in Footscray and can probably claim to having done more work in this municipality

than any other practising architect at the present time.

Other large factories built by Mr. Plottel include Julius Kayser's factory at Richmond, the Marshall Shoe Co., at Richmond, A. W. Allen's, Melbourne, and principal city works are: Scott's Hotel, Victoria Club Buildings, Beehive Building and Brash's, Elizabeth street.

Mr. A. E. McCAUSLAND.—Although he resigned his position as city engineer, and was succeeded by Mr. Munro, before the construction of the new building, Mr. McCausland gave considerable time and thought to the preliminary plans. He really supervised the details that led up to the plans placed before the council for final consideration. Mr. McCausland started as an engineering cadet with the Footscray council and subsequently gained appointment as city engineer in succession to Mr. Neylan, and he held the position with distinction until a little more than 12 months ago when he resigned to accept a similar appointment with the Prahran Council. Not a small amount of the credit for the new building must be accorded Mr. McCausland.

GLAZING

of

Footscray Town Hall

by

BROOKS, ROBINSON Pty. Ltd.

Glass Merchants and
Shop Fitters

59-65 ELIZABETH STREET
MELBOURNE, C.1

Factory: Maffra St., Sth. Melbourne

The Largest and Most Complete Motor Recon- ditioning Garage in the State

- BODY BUILDING
- MOTOR TRIMMING
- UPHOLSTERING
- DUCO
- ELECTRIC WELDING, etc.

W. H. & S. MASSEY Pty. Ltd.

Motor and General Engineers

369-377 WILLIAMSTOWN ROAD
YARRAVILLE, W.13, MELB., Vic.

Telephone: Footscray 1270 (2 lines)

Electric Supply Undertaking

The Council of the City of Footscray was one of the first of the few Metropolitan Municipalities to take advantage of the Electric Light and Power Act and applied for the necessary Order of the Governor-in-Council to be constituted an Undertaker to distribute energy for power and lighting.

This important Branch of the Municipal functions was started in the year 1912 and has increased the business so much that today Footscray has actually a revenue of £154,200 per annum.

CAPITAL EXPENDITURE AND REVENUE

Year	Expenditure	Revenue
1912	£10067	£2966
1917	26830	15064
1922	59035	36050
1927	151165	87675
1932	208222	104692
1936	235000	154222

Expenditure on Lamp Standards to 1936 £10,000

At the beginning of the undertaking approximately 300 gas lamps were converted to electric.

There are at the present over 2000 60-watt lamps in use.

COMPARISON OF UNITS SOLD

Year ending	Light	Power	Total
30/9/1912	64,000	21,300	85,300
30/9/1936	3,184,080	24,743,979	27,928,059

THE GENOA TERRAZZO CO. Pty. Ltd.

233-235 NICHOLSON ST., CARLTON, N.3.

Telephone: F 1069

executed the following work at the new

Footscray Town Hall

- Terrazzo Dado, Capping, Skirting, String, also Treads and Risers of Hyde St. Stairs.
- Terrazzo Floor to Reception Hall off Supper Room.
- Ironite in buff color to treads and risers of Supper Room Escape Stairs; also Council Chamber Escape Stairs.

FINANCIAL STORY OF CITY'S HEADWAY

As illustrating the remarkable development of Footscray the following figures are quoted:—

Year	Net Annual Value of Rateable Property	Revenue of Council
1876	£33,229	£6,048
1880	40,287	9,044
1885	64,333	10,441
1900	82,962	13,657
1905	96,139	15,531
1910	123,463	19,721
1915	211,249	46,602
1920	264,134	61,896
1925	489,011	141,000
1930	645,680	200,000
1931	645,076	193,254
1932	558,608	197,748
1933	526,692	201,869
1934	528,913	211,769
1935	533,302	220,000
1936	595,000	234,000

The strong room doors for this building were designed and installed by

THE VICTORIA SAFE CO.

152 Victoria Street

East Brunswick

TELEPHONE: BRUNSWICK 35

GRIFFITHS BROS.

Master Plumbers

Suppliers and Contractors to the
Footscray City Council

93 Albert St., Footscray, W.11

Telephone: Footscray 109

This
Magnificent
New
Town Hall

was equipped with

Sanitary
Fittings
Tiles
and
Stainless
Steel Sinks

by

ROGERS, SELLER & MYHILL
PTY. LTD.

Manufacturers and Importers of
Fireplaces, Tiles, Bathroom Fittings and
Builders' Hardware

Showrooms:

15 McKILLOP STREET, MELBOURNE, C.1.

Cor. CITY ROAD AND FANNING ST., STH. MELBOURNE.

Telephones: Central 2580, 2581, 2582.

G
O
L
L
I
A
T
H

C
E
M
E
N
T



CEMENT
DISTRIBUTORS
PTY. LTD.

55 William Street
Melbourne

THE HOFFMAN BRICK & POTTERIES LTD.

Showrooms and Office: 123 Queen St., Melbourne.
(Cent. 27.)

Works: Dawson Street, Brunswick. (Bwk. 683.)

FOR

BRICKS

Texture and Heeler
Chemical
Vitrified
Reds and Creams

TERRA COTTA

Roofing Tiles—
Salt-glazed and Variegated
Lumber for Wall Partitions
Air Vents and Chimney Pots
Plugging Blocks

SANITARY WARE

Lavatory Basins
Stall Urinals, etc.

DRAIN PIPES

Stoneware
Agricultural
Gutter Bricks, etc.

Prompt Delivery, Direct from our Works by
Road or Rail

Write for Our Catalogue—State
which Lines are Required

Sphere of Sport

Footscray, besides being the Birmingham of Victoria, knows how to "play" and in every sphere of sport, representatives of our city have taken leading roles. Our civic leaders are keenly alive to the value of healthy recreation and by their policy of providing as many open spaces as possible have given practical support to the theory that a healthy body is a factor in the cultivation of a healthy mind.

This article does not afford scope for specialisation and reference can be made only in a general way to the extensive sporting activities. Municipal cricket and football grounds are spread all over the city area and every reasonable attention is given to their preparation and maintenance so as to give those using them good facilities.

These grounds, of course, are devoted to amateur sport and in the competitive side Footscray clubs have brought honor to the city in the world of athletics, both as individuals and as clubs. It is worthy of mention that the city was represented at the Olympic Games at Berlin this year by Chris Wheeler, a member of the Footscray Amateur Cycling Club.

Footscray is a sport-loving city and the people take a deep and practical interest in the various sports. Clubs are universally well-managed and in this, adults, many of whom are former athletes, play a leading part. They act in the capacity of coaches and their advice and service are available on the administrative side.

A visitor to Footscray on a Saturday afternoon would look with amazement upon the sporting activities. At this time of the year there are to be seen hundreds of cricket clubs indulging in their game and in point of numbers this sport is rivalled by tennis. A tennis association organised in Footscray a few years ago has grown to embrace more than 500 registered players and it requires only a moment's thought to visualise what this means in organisation, along with a big demand for courts on which to play. The municipality has allocated two of the latest type of courts—one at the western reserve and the other at Yarraville—and there is also a municipal public court at Yarraville. The other courts are either owned or hired by the various clubs.

Senior cricket and football, of which the city has two clubs, have first-class ovals—one known as the Western Reserve, and the other in the south ward of the municipality.

One more reference, amongst many that could be made were space available, should suffice to stress Footscray's interest in the welfare of youth. This is to the municipal baths. Erected in a central part of the city, this facility serves a most useful purpose and its general excellence is the subject of all-round commendation.

Progress of City

Aptly described as the Birmingham of Australia, the City of Footscray has made remarkable progress during the past sixty years.

The story of its development from an unpretentious locality, known to the people of Melbourne only as a supplier of bluestone for their roads and buildings, to one of the largest manufacturing cities of Australia, is one of the romances of modern industrial life.

When the foundation stone of the old Town Hall was laid in 1875, Footscray was just a river port and a site for a few venturesome manufacturers. To-day it is an important and prosperous city, housing within its boundaries 300 registered factories, 1200 shops, and over 12,000 homes. It is not only a very favored district for the establishment and expansion of a wide variety of secondary industries, but it is also a thriving centre of retail trade—a place of parks and gardens and many attractive homes.

All this has been brought about through the wisdom and enterprise of local residents. By their civic knowledge, careful planning, and administration, they have, in recent years, transformed their city. They have taken as their motto, not only industry and progress, but the ideals of beauty and culture, which seek to make a better and happier environment for the working man.

To-day, Footscray may be justly proud of its clean, well repaired streets, its beautiful public parks, gardens, and children's playgrounds. It is indeed a place of which any loyal, intelligent Australian may well be proud, combining as it does industrial civic integrity and a comfortable standard of living for its 60,000 inhabitants.

The stateliness and beauty of Footscray's new Municipal Offices are in keeping with the progressive spirit of the city itself. By building for themselves a civic centre of such dignity and charm, the people of Footscray have declared to the world their faith in themselves and their determination to continue the good work of the past by striving for a greater, more beautiful and even more prosperous municipality. This magnificent building should inspire the people to choose nothing but the best for Footscray, and to give enthusiastic support to all movements which aim at the better planning of the whole of Melbourne's Western Suburban Districts.

Municipalities Are Proud
To Support . . .

AUSTRALIAN INDUSTRY

●
"ARC"
BRAND

Geelong Cement

●
made in Victoria
was used in the
Construction of
the

FOOTSCRAY
TOWN HALL

AUSTRALIAN CEMENT LIMITED

TEMPLE COURT, 422 COLLINS STREET,
MELBOURNE, C.1.

●
Telephone: Central 1773

THE EARLY HISTORY OF FOOTSCRAY

(By Claude Smith, Esq., J.P.)

It was on the third of June, 1835, that the Footscray blacks poised their spears at the Batman party, who pleasantly gazed on the rich grasses of Iramoo, the native name for our present city.

The first meeting in the metropolitan area between the blacks and whites, the civilised and the savage, was on Footscray soil, and owing to the knowledge gained by Batman with his exploits with the wilder aborigines of Tasmania, his negotiations with the natives of this area were without force or bloodshed, and his peaceful entry into Footscray was the dawn of civilisation and the starting of industry in this State.

Twice John Batman traversed our territory, and had our river been fresh instead of salt, Footscray would have undoubtedly been the capital of Victoria, and had he not got caught in the fork of the two rivers opposite Parker Street, Footscray, where some of his party were forced to swim across to get their boat, he would likely have gone back to Tasmania without having found "the place for the village" near Queen's Bridge.

The fact of his being in Footscray twice, and five days before he discovered the Melbourne site, makes our City the parent of the Metropolis.

Iramoo, when Batman found it, was a squatter's paradise prepared by nature for the exploitation of man and his flocks and herds, with luscious grasses knee deep; low-set, shady she-oaks about 100 yards apart, with sparse undergrowth and embellished with and covered profusely with the prettiest of wild flowers of various shades and colours.

The overflow of the two local rivers spread at high tide over to the hill where the West Melbourne Stadium now stands, and past North Melbourne, Hotham Hill and Flemington to Maribyrnong. Batman's Swamp, as it was then called, was alive with wild duck, swans, teal, pelicans, plover, etc.

Footscray's blacks were well built, agile and warlike, but after the white man's intrusion soon degenerated, and when Batman and Gellibrand landed their flocks of sheep their dogs drove all the emus and kangaroos and native fauna out of the district and left the aborigines nothing to eat, and consequently they speared the sheep to live, which brought reprisals from the owners.

If our pioneers could rise today what a glorious revelation it would be to them. Large areas that were bought from the natives for a few tomahawks, looking glasses, etc., have since been sold in Nicholson Street for hundreds of pounds sterling per foot, and where sheep once grazed a great city has arisen, and when formerly there was a bridgeless river now lie six modern crossings for railways and vehicular traffic. Great factories with tall chimney stacks belch forth their smoke to the skies, indicative of the internal energy of tons of machinery and human effort of skilled and manual labour. Loud whistles mingle with the grinding of machinery, with clang and clatter rending the air where once the only noise was the rush of the 'roo and the cries of the chase and the wild shrieks and yells of the corroboree.

MODERN LIGHTING

The whole of the ornamental lighting fittings, bulkheads and internal plate glass signs in the new FOOTSCRAY TOWN HALL were designed and manufactured by us to the order of the architect.

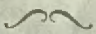
Designers and Manufacturers
in
Modern lighting, glass
bending, ornamental metal
work, etc.

NEWTON AND GRAY

PTY. LTD.

Metal and Glass Craftsmen
Illuminating Engineers

342 St. Kilda Road
Melbourne, S.C.1
Phone: M 3360



Printed by The Mail Publishers,
264 Barkly Street, Footscray, W.11.

