

Lovell Chen's Stroll on the South Side

The area immediately south of Melbourne's CBD, either side of St Kilda Road, includes some of the city's foremost sites dedicated to the arts and leisure.

Whilst there's major construction work underway behind NGV International and Arts Centre Melbourne's Theatres Building, Lovell Chen invites you to RE/DISCOVER the Melbourne Arts Precinct from a different perspective.

Our suggested route meanders up and down natural and created undulations. There are 6 points at which to pause during the walk, all offering less-familiar views of the city and the institutions feeding its cultural life.

Lovell Chen acknowledges this walk takes place on the lands of the Bunurong and Wurundjeri Woiwurrung peoples of the Kulin nation who have been custodians of this land for thousands of years. We acknowledge their stories, connection to land, water and culture which is embedded in Country. We pay our respects to their Elders past and present.

- 1 Princes Walk Vaults, Federation Wharf
- 2 Grassed terrace and Stage Door, Hamer Hall, Arts Centre Melbourne
- 3 Dodds Street Linear Park
- 4 Crest of the hill at the Sidney Myer Music Bowl
- 5 Pioneer Women's Memorial Garden
- 6 The Genie sculpture & surrounds

2024 marks the 50th anniversary of state heritage legislation in Victoria.

This half square kilometre contains more than a dozen sites included on the Victorian Heritage Register. Learn more about them via this code.





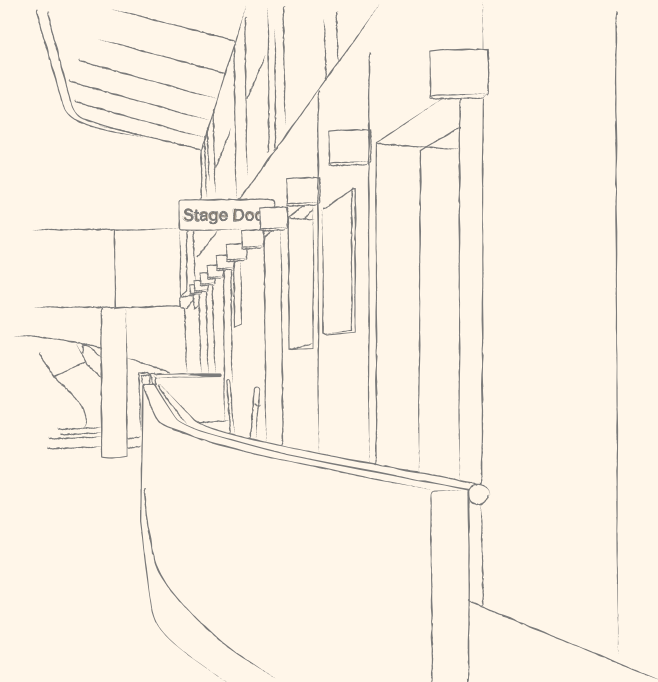
1

Princes Walk Vaults, Federation Wharf

A series of stepped and inclined paths lead down from the bustle of Federation Square to the water's edge. Since 1890 twenty barrel-vaulted brick cells faced in Malmsbury basalt have both enabled a means of crossing, and held the city back from, the Birrarung (Yarra). The City of Melbourne's Greenline Project aims to improve our connection with the river.

Make sure to go under the bridge to reach the other side of St Kilda Road.

fold here



2

Grassed terrace and Stage Door, Hamer Hall, Arts Centre Melbourne

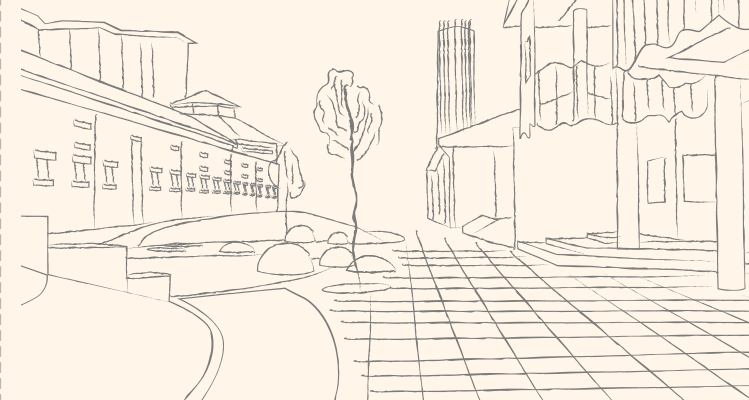
Step away from the crowd, up onto the grass and beyond to Hamer Hall's circular balcony where your reward is an almost private urban panorama (2A). The concert hall was originally intended to be primarily underground and you'll get a sense of this descending to the performers' entrance (2B).

fold here

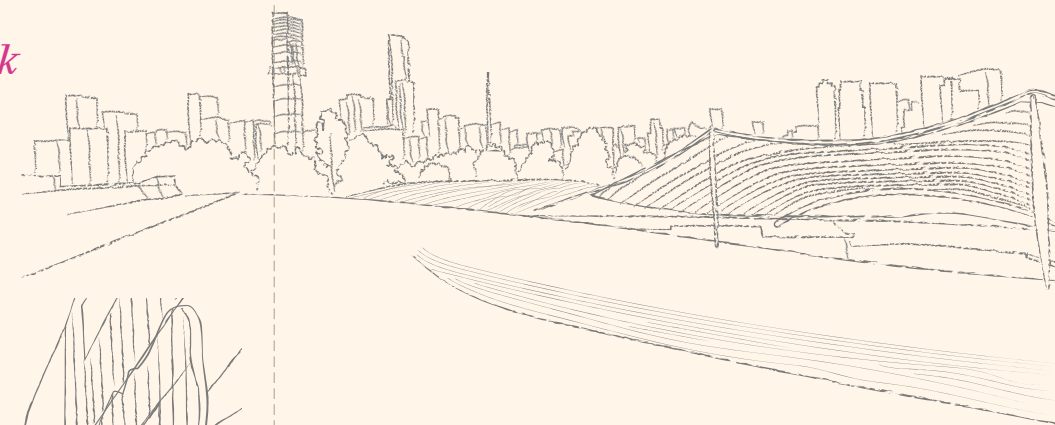
3

Dodds Street Linear Park

Where Dodds Street previously operated as a thoroughfare between creative institutions, you'll now find a completely transformed space where the heritage bricks of the old stables building bleed into new paved pathways; bluestone spheres emerge from the ground plane; and amphitheatre seating provides a space to gather, perform or rest.



fold here

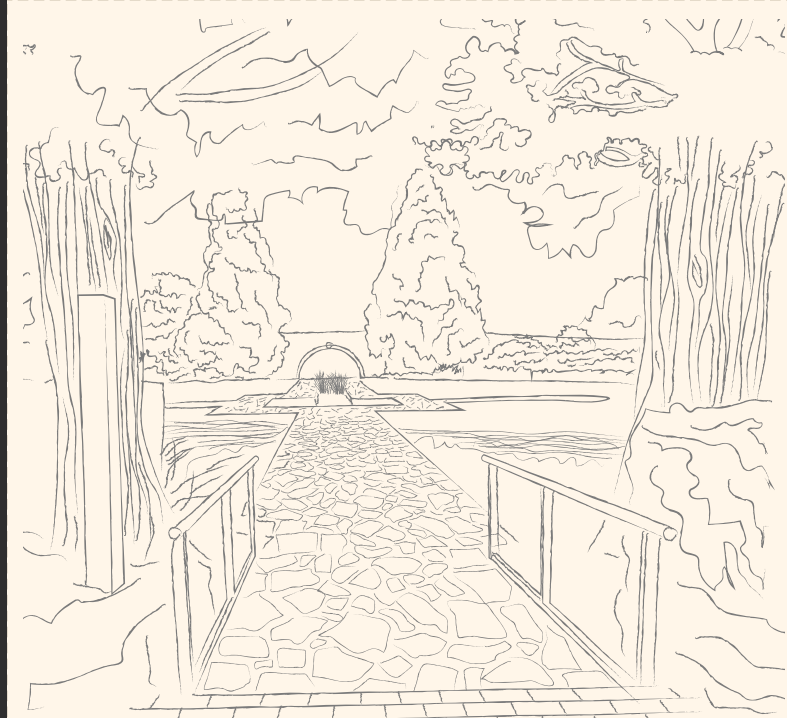
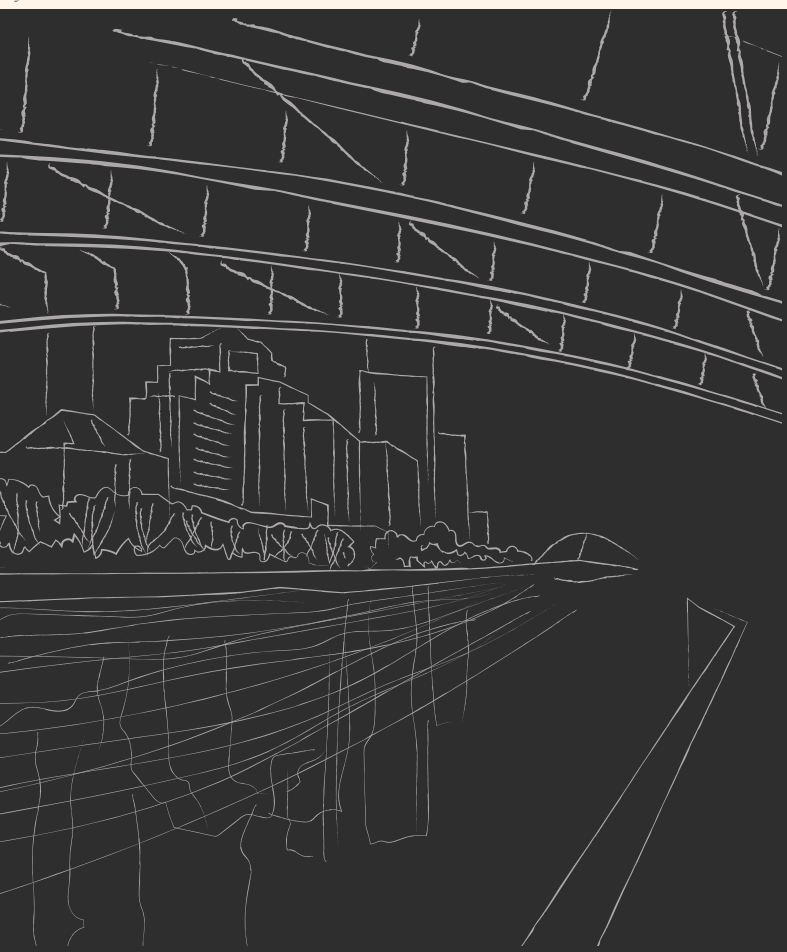


4

Crest of the hill at the Sidney Myer Music Bowl

The Domain Parklands are on the traditional lands of the Bunurong and Wurundjeri Woiwurrung peoples of the Kulin nation and have long been an important gathering place. Extensive earthworks were carried out to create this amphitheatre in 1958-1959, with a slope providing views to the sound shell and excavated soil used to create sound-deflecting banks on either side.

fold here



5

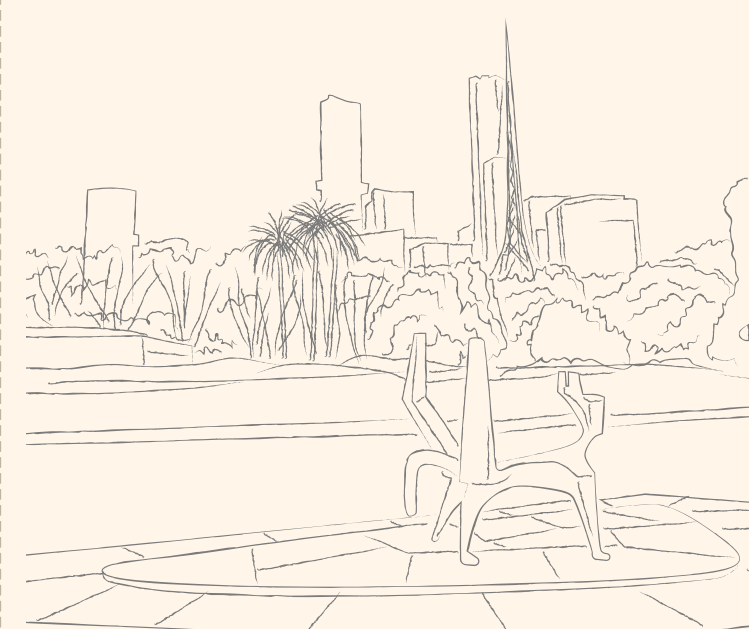
Pioneer Women's Memorial Garden

On this elevated site above the Birrarung lies a worthy diversion from expansive views. Enter a secluded, sunken garden with semi-spherical grotto and reflective pool. Allow the city hubbub to drop away.

6

The Genie sculpture & surrounds

Numerous memorials and statues are sprinkled amidst the sinuous paths and clustered ornamental plantings of the Domain Parklands - most command an air of formality, even reverence, but this bronze figure actively encourages physical interaction. The Genie was created as a fantasy play sculpture for children.



LOVELL CHEN

RE/ DISCOVER YOUR CITY
OPEN HOUSE MELBOURNE



A Stroll on the South Side

LOVELL CHEN

RE/ DISCOVER YOUR CITY
OPEN HOUSE MELBOURNE